



# 2025

CAROLINAS GCSA  
CONFERENCE  
& TRADE SHOW

November 17 – 19

Myrtle Beach Convention Center

## CONFERENCE PROGRAM

# Green Resource<sup>®</sup>

Fertilizer • Chemicals • Seed • Erosion

## EARLY ORDER PROGRAM

### Triad

5204 Highgreen Court  
Colfax, NC 27235  
(336) 855-6363

### Triangle

1218 Mangement Way  
Garner, NC 27529  
(919) 779-4727

### Coastal

2407 Ocean Hwy, West  
Shallotte, NC 28459  
(910) 363-1230

### Charlotte

10404 Granite Street, Ste K  
Charlotte, NC 28273  
(704) 927-3100

### Winston

191 Budd Blvd  
Winston Salem, NC 27103  
(336) 793-9230

### Ladson

9492 Hamburg Road  
Ladson, SC 29456  
(854) 999-4039



**CALL YOUR GREEN RESOURCE SALES PROFESSIONAL AND SAVE!**

**AUTHORIZED DISTRIBUTOR • MAXIMIZED SAVINGS IN OCTOBER • EXTENDED PAYMENT TERMS**



# 2025 CAROLINAS GCSA



# CONFERENCE & TRADE SHOW

## CONTENTS

President's Message.....	2
Board of Directors.....	3
Executive Director and Staff .....	3
Sheraton Hotel Accommodations .....	3
Summary of Events .....	4
Distinguished Service Award.....	6
Corporate Partners .....	7
Assistant Superintendent Reception .....	8
Blue Ridge Breakfast.....	8
Monday Events .....	9
Golf Championship .....	10
Sporting Clay Event.....	13
Tuesday Events .....	22
Carolinan Night.....	34
Wednesday Events.....	35
27-Hole Challenge.....	40
General Information .....	41
Meet the Speakers.....	42
Pesticide Credits & GCSAA Education Points Chart .....	46
Conference and Show Registration Information/Fees...	47
Superintendent Image Campaign .....	48

## ADVERTISERS

Green Resource .....	Inside Front
Brandt .....	20
New Life Turf .....	21
JRM Inc.....	Inside Back
John Deere.....	Back Cover



## 2025 CONFERENCE & SHOW COMMITTEE MEMBERS

<b>Daryl Ewing</b>	<i>Green Resource – Chairman</i>
<b>Brian Green</b>	<i>Lonnie Poole Golf Course</i>
<b>Alex Tolbert</b>	<i>Orangeburg Country Club</i>
<b>Don Garrett, Jr., CGCS</b>	<i>The Walker Course at Clemson University</i>
<b>Ryan McClannon</b>	<i>Reynolds Park Golf Course</i>
<b>Eric Dusa, CGCS</b>	<i>White Plains Golf Club</i>
<b>Jeremy Boone, CGCS</b>	<i>Springdale Resort</i>
<b>Chris Neff</b>	<i>USGA</i>
<b>Patrick Dryman</b>	<i>Forest Creek Golf Club</i>
<b>Jim Huntoon</b>	<i>Horry-Georgetown Technical College</i>
<b>Joe Roberts, Ph.D.</b>	<i>Clemson University</i>
<b>Zee Ahmed, Ph.D.</b>	<i>Clemson University</i>
<b>Travis Gannon, Ph.D.</b>	<i>NC State University</i>
<b>Jim Kerns, Ph.D.</b>	<i>NC State University</i>
<b>Lee Butler</b>	<i>NC State University</i>
<b>Grady Miller</b>	<i>NC State University</i>
<b>Tim Kreger</b>	<i>Executive Director, Carolinas GCSA</i>
<b>Angie Davis</b>	<i>Office Manager, Carolinas GCSA</i>
<b>Melissa Smith</b>	<i>Membership Coordinator, Carolinas GCSA</i>

#carolinasshow2025



# A MESSAGE FROM OUR PRESIDENT



Welcome to your 2025 Carolinas GCSA Conference and Trade Show program. What a Show this year's is going to be! If early booth sales and demand for sponsorship opportunities were any indication, we can expect to set some new records this year.

The golf industry continues to ride high and nowhere is that more evident than right here in the Carolinas. New courses continue to be built, and golfers are playing more rounds than ever. Many of our industry partners are run off their feet trying to keep up with demand for their goods and services. And that is a great problem to have.

Our Show in Myrtle Beach gives us a great opportunity to keep that ball rolling. First and foremost, I urge everyone to make the most of their time on the trade show floor. Those people manning the exhibit booths are here to help and their support is the reason this show thrives like it does, year after year. Please give them a few minutes of your time and, even if you don't end up doing any business, at least be sure to thank them for coming.

We're just as proud to offer another stellar education program, with some of the best minds in their fields. The ever-popular 27-Hole Challenge is another highlight and another reason to visit participating booths. For many of you, the week begins with our golf championship, which is all the more special this year as the event's major partner, Smith Turf & Irrigation, celebrates their centenary.

Of course, that's not all that goes on this week. There are also countless opportunities to mix pleasure with business as we catch up with old friends and make new ones. And at the end of the day, as much as we all love our game and our profession, it's the people that truly make it special.

That was on clear display just a year ago when Hurricane Helene devastated significant parts of our region. The outpouring of support from within our ranks was as impressive as it was appreciated by those on the receiving end. But we should never take any of it for granted. The success of our Conference, and indeed our professional community, depends on us turning up and taking part.

Let's keep at it!

Alex Tolbert  
President Carolinas GCSA



**W. Alex Tolbert**  
*President*





# BOARD OF DIRECTORS



**Vice-President**  
**Brian C. Green**  
Lonnie Poole Golf Course at  
NC State, Raleigh, NC



**Secretary-Treasurer**  
**Daryl P. Ewing**  
Green Resource  
Indian Land, SC



**Past President**  
**Peter Gerdon**  
Grandfather Golf & Country  
Club, Linville, NC

## DIRECTORS



**Jeremy D. Boone, CGCS**  
Springdale Resort  
Canton, NC



**Eric Dusa, CGCS**  
White Plains Golf Club  
Pageland, SC



**P. Dean Farlow**  
Deep Springs Country  
Club, Stoneville, NC



**Donald C. Garrett, Jr., CGCS**  
The Walker Course at  
Clemson University  
Clemson, SC



**Matthew Jones, CGCS**  
Forsyth Country Club  
Winston-Salem, NC



**R. Todd Lawrence, CGCS**  
The Country Club at  
Wakefield Plantation  
Raleigh, NC



**Ryan D. McClannon**  
Reynolds Park Golf Club  
Winston-Salem, NC



**Matthew T. Smith**  
Wilmington Golf Course  
Wilmington, NC



**Bradley A. Young**  
Hilton Head National  
Bluffton, SC

## HOTEL ACCOMMODATIONS



### Headquarters Hotel

**Sheraton Myrtle Beach Convention Center Hotel**  
2101 North Oak Street, Myrtle Beach, SC

Our room block dates are from:

**Saturday, November 15th - Thursday, November 20th**

Call **1-888-627-8203** to book your room.

For call in, you may ask for CGCSA 2025 Attendees or the group id code GO3.

To reserve your room online, the link is:

<https://www.marriott.com/event-reservations/reservation-link.mi?id=1744725290333&key=GRP&guestreslink2=true&app=resvlink>

**WE HAVE A VERY LARGE ROOM BLOCK SO IF YOU HAVE ISSUES RESERVING YOUR ROOM, PLEASE CALL THE CAROLINAS GCSA OFFICE AND SPEAK WITH ANGIE DAVIS AT 864-843-1150.**

**Room Rate: \$112 per night**

**Parking: \$5 per day**

*The Sheraton MBCC Hotel WILL NOT SOLICIT reservations from past guests. If a third party company reaches out to you presenting themselves to be with the Sheraton, do not give any personal information or a credit card number.*

## EXECUTIVE DIRECTOR AND STAFF



**Tim Kregar**  
Executive Director



**Angie Davis**  
Office Manager



**Melissa Smith**  
Membership  
Coordinator



**Kim Clark**  
Local Association  
Coordinator



**Trent Bouts**  
Editor  
Carolinas Green



# SUMMARY OF CONFERENCE AND SHOW



SUNDAY, NOVEMBER 16, 2025

6 – 9 pm

**Assistant Superintendent Reception**

*RipTydz*

*(Must be an assistant superintendent to attend)*

MONDAY, NOVEMBER 17, 2025

7 am	<b>Blue Ridge Breakfast</b>	<i>Mammy's Kitchen</i>
7 am – 4:30 pm	<b>Registration Open</b>	<i>Hall of Fame</i>
9 am	<b>Sporting Clay Event</b>	<i>Back Woods Quail Club, Georgetown, SC</i>
11 am Shotgun Start	<b>Golf Championship</b>	<i>Caledonia Golf &amp; Fish Club, Prestwick Country Club, True Blue Golf Club and Wachesaw Plantation Club</i>
11:30 am – 12:30 pm	<b>Seminar Luncheon</b>	<i>Ballroom DE (Monday Seminar Registrants Only)</i>
6 – 9 pm	<b>Exhibitor Move-In for Large Equipment</b>	<i>Exhibit Hall</i>

## MORNING SEMINARS • 8–11:30 am

1	<b>Advanced Management of Ultradwarf Bermudagrass Golf Greens</b>	<i>Bert McCarty, Ph.D., Joe Roberts, Ph.D.</i>
2	<b>NEW Practical Strategies for Managing Insect Pests for Cool-Season Turfgrasses</b>	<i>Zee Ahmed, Ph.D., Terri Billeisen, Ph.D.</i>
3	<b>Spray Masters Making the Most Out of All You Apply</b>	<i>Travis Gannon, Ph.D.</i>
4	<b>NEW Pain in the Grass: POA Management in the Southeast</b>	<i>Jim Brosnan, Ph.D.</i>
5	<b>NEW Understanding Turfgrass Fungicides</b>	<i>Wendell Hutchens, Ph.D. Richard Latin, Ph.D.</i>
6	<b>Troubleshooting &amp; Diagnosing Turf Issues!</b>	<i>Lee Butler, Jim Kerns, Ph.D.</i>

## AFTERNOON SEMINARS • 12:30–4 pm

7	<b>Making Herbicides Work Or Why They Sometimes Fail?</b>	<i>Travis Gannon, Ph.D., Bert McCarty, Ph.D.</i>
8	<b>NEW From Selection to Perfection: Science-Driven Bunker Success</b>	<i>Brian Gietka, Chris Neff</i>
9	<b>NEW Smarter Spraying: Mapping Pests with GPS, Sensors and Drones</b>	<i>Ken Rost, Wendell Hutchens, Ph.D., David McCall, Ph.D.</i>
10	<b>NEW Advancing Turf Health Through Microbiome and Ecological Practices!</b>	<i>Zee Ahmed, Ph.D., Joe Roberts, Ph.D.</i>
11	<b>Advanced Weed Management - Cool Season Turfgrasses</b>	<i>Jim Brosnan, Ph.D., Matt Elmore, Ph.D.</i>
12	<b>You Pick the Pests: Turf Insect Management</b>	<i>Terri Billeisen, Ph.D.</i>

TUESDAY, NOVEMBER 18, 2025

7 am – 2 pm	<b>Exhibitor Move-In</b>	<i>Exhibit Hall</i>
7 am – 8 pm	<b>Registration Open</b>	<i>Hall of Fame</i>
11:30 am – 12:30 pm	<b>Seminar Luncheon</b>	<i>Ballroom DE (Tuesday Seminar Registrants Only)</i>
1 pm	<b>Student Turf Bowl Participant Lunch</b>	<i>Ballroom E</i>
2 – 4 pm	<b>Carolinas GCSA Student Chapter Turf Bowl</b>	<i>Ballroom D</i>
4 – 4:30 pm	<b>Student Question and Answer with Assistant Superintendents/Job Fair</b>	<i>Ballroom D (immediately following Turf Bowl)</i>
3:30 – 7 pm	<b>Trade Show Open</b>	<i>Exhibit Hall</i>
4 – 8 pm	<b>Carolinas Night</b>	<i>Exhibit Hall</i>
7 – 8 pm	<b>Women in Turf</b>	<i>Vereens booth # 2212</i>

## MORNING SEMINARS • 8–11:30 am

13	<b>Ultimate Weed Control Guide Panel</b>	Bert McCarty, Ph.D. (Moderator), Jim Brosnan, Ph.D., Matt Elmore, Ph.D., Travis Gannon, Ph.D.
14	<b>All the Forms of Phosphorus - Why You Should Care!</b>	Beth Guertal, Ph.D.
15	<b>Being an Effective Superintendent....It's Not All About Growing Grass!</b>	Don Garrett, Jr. CGCS, Jim Huntoon
16	<b>How to Stay Cool When Cool-Season Putting Greens Decline</b>	Lee Butler, David McCall, Ph.D.
17	<b>Getting to the Root of Soilborne Diseases - Warm Season Turfgrasses</b>	Jim Kerns, Ph.D., Joe Roberts, Ph.D.
18	<b>Aging Putting Green Root Zone &amp; Management of Organic Matter</b>	Roch Gaussoin, Ph.D., Jim Murphy, Ph.D.
19	<b>NEW Elevating Excellence: Strategic Approaches to Leadership, Scheduling, and Wellness in Golf Course Management</b>	Steve Hamilton, CGCS The Dunes Golf and Beach Club David Lee, Forest Creek Golf Club Chris Neff, USGA Green Section
20	<b>NEW Water: The Role Golf Courses Can and Should Play!</b>	Becky Grubbs Bowling, Ph.D.
21	<b>Building Strong Foundations: Expectations and Communication Between Golf Course Superintendents and Assistant Superintendents</b>	Richard Brown, Florence Country Club Tim Carpenter, Gaston Country Club Harrison Howe, Gaston Country Club Alex Tolbert, Orangeburg Country Club

## AFTERNOON SEMINARS • 12:30–4 pm

22	<b>NEW Soil and Water Chemistry: Definitions, Discussions and (Things to) Do!</b>	Beth Guertal, Ph.D., Becky Grubbs Bowling, Ph.D.
23	<b>The Architecture of a Successful Renovation!</b>	Greg Hufner, Total Turf Golf Services Chris Jordan, Olde Eight Golf Club Shane LeBaron, Olde Eight Golf Club Nick Mazella, Mazzella Partnership Chris Neff, USGA Green Section Drew Rogers, JDR Design Group
24	<b>Nematodes: Past, Present, and Future Directions for Management of These Elusive Pests</b>	David McCall, Ph.D. Joe Roberts, Ph.D.
25	<b>Successful Bentgrass Management on Greens and Fairways!</b>	Matt Elmore, Ph.D., Jim Murphy, Ph.D.
26	<b>NEW Pesticides 101 - Fundamentals of Safe and Effective Pesticide Use in Turfgrass Management!</b>	Zee Ahmed, Ph.D., Lee Butler Navdeep Godara, Ph.D.
27	<b>Strategies for Goosegrass, Annual Bluegrass, Crabgrass, Doveweed and Other Growing Weed Problems!</b>	Jim Brosnan, Ph.D. Travis Gannon, Ph.D.
28	<b>Everything You Need To Know About Ultradwarf Bermudagrass (Panel Discussion)</b>	David Lee (Moderator) Forest Creek Golf Club Steve Hamilton, CGCS, The Dunes Golf and Beach Club Matt Jones, CGCS, Forsyth Country Club Kevin Lutz, Cabarrus Country Club
29	<b>NEW USGA Power Hour</b>	Jordan Booth, Ph.D., USGA Green Section Carson Letot, Ph.D., USGA Green Section Wesley Stewart, M.S., USGA Green Section Cole Thompson, Ph.D., USGA Green Section George Waters, USGA Green Section
30	<b>Aquatic Plant Management for Golf Course Waterbodies</b>	Matt Cutulle, Ph.D., Rob Richardson, Ph.D.

## WEDNESDAY, NOVEMBER 19, 2025

7 am - 2 pm	<b>Registration Open</b>	Hall of Fame
6:45 - 7:45 am	<b>Fellowship Breakfast</b>	Ballroom D
8 - 11 am	<b>General Education Session</b>	Ballroom E
11 - 11:15 am	<b>DSA Presentation</b>	Ballroom E
11:15 - 11:30 am	<b>Annual Business Meeting</b>	Ballroom E
11:30 am - 2:30 pm	<b>Trade Show Open</b>	Exhibit Hall
2 pm	<b>27-Hole Challenge Prize Giveaway</b>	Exhibit Hall
2:30 - 8 pm	<b>Exhibitor Tear Down</b>	Exhibit Hall
6 pm	<b>Distinguished Service Award Dinner</b>	By invitation only, The Dunes Golf & Beach Club

\*All seminar locations will be displayed in the registration area.



# DISTINGUISHED SERVICE AWARD 2025

## BOB FARREN, CGCS



When it was announced earlier this year that Bob Farren, CGCS would receive the 2025 Carolinas GCSA Distinguished Service Award, more than a few close observers wondered why it had taken so long. One reasonable explanation might be that he was simply too busy accepting other honors.

There can be no doubt that today, Farren, director of golf course management at Pinehurst Resort & Country Club, stands among the most decorated members of his profession, anywhere. With the DSA - the highest honor the Carolinas GCSA bestows - it's getting to be a close call between how many awards he's won and the number of courses he oversees. And that includes Pinehurst No. 11, due to open this fall.

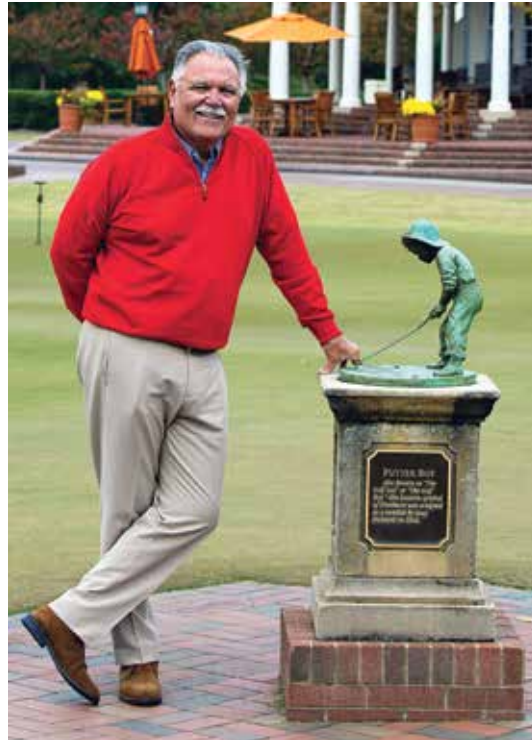
One of those who feels Farren did enough for his association and profession to earn the DSA long ago is Carolinas GCSA president Alex Tolbert, from Orangeburg Country Club in Orangeburg, SC.

"Bob Farren has been a beacon for our profession for longer than many of our members have been alive," Tolbert says. "For decades, he has been a leader, at his facility, across our region, and on the national stage. We all walk a little taller in our roles because of his efforts and his example."

Indeed, it has been 30 years since Farren led the Carolinas GCSA as president, and more than 40 since he arrived at Pinehurst from West Virginia in 1982. Over the years, he played an integral role in restoring Pinehurst's standing in the game to the point where it was designated as the first U.S. Open Championship "anchor site" by the USGA.

Pinehurst's claim to being the "home of American golf" may reach all the way back to James W. Tufts and Donald Ross. But that grip slipped significantly in the decade before Robert H. Dedman Sr. and ClubCorp took over. If Dedman saw "a fallen angel" in what had become of Pinehurst, Farren helped return its wings.

Under his watch, Pinehurst No. 2 has hosted four U.S. Open Championships and a U.S. Women's Open Championship. Another four U.S. Opens and another U.S. Women's Open



are scheduled there between now and 2047. At 68 today, Farren will be watching instead of working a majority of them, but make no mistake, he had a hand bringing them all into being.

That's partly why, but only partly, the USGA honored him with the Green Section Award last year. His "distinguished service to golf through work in turfgrass" may have been centered in Pinehurst but its impact reached far beyond. Amiable, erudite and at ease in front of a camera and a microphone, he has long been a go-to-guy for golfing media from local newspapers to Golf Channel.

He was just as comfortable at the front of a room sharing his knowledge with fellow superintendents at seminars and

conferences across the country. One of his busiest periods in the spotlight was when he served as a vanguard for the game's efforts to reduce water consumption. Piloting a significant reduction in the amount of maintained acreage across all courses at Pinehurst, he saved water and just as importantly amid a downturn in golf after the Great Recession, he saved money.

That example became a case study for others to follow and played a role in Farren earning Golf Digest magazine's Green Star Award for outstanding environmental practices in 2014. That followed GCSAA's President's Award for Environmental Stewardship in 2007. He received an Anuvia Legend Award in 2018 through Golfdom magazine for a "lifetime of innovation and achievement."

In 2019, he was inducted into the Carolinas Golf Hall of Fame, alongside the likes of Arnold Palmer, Raymond Floyd and, of course, Donald Ross. In 2022, GCSAA called him to the stage again, this time to accept the Col. John Morley Award for his "outstanding contribution to the advancement of the profession."

And those are just the highlights. There have been countless other tributes and expressions of gratitude, large and small, from groups and from individuals. Finally, the Carolinas GCSA joins that list with a special ceremony and presentation on Wednesday, November 19.

# 2025 CAROLINAS GCSA CONFERENCE AND SHOW CORPORATE PARTNERS

MONDAY GOLF CHAMPIONSHIP	 		WEDNESDAY FELLOWSHIP BREAKFAST	 		27-HOLE CHALLENGE	  	
GOLF PRIZES	HOLE IN ONE CONTEST		STUDENT TURF BOWL			CAROLINAS NIGHT	  	
	CLOSEST TO THE PIN		DSA DINNER	 			 	
	LONGEST DRIVE			 				
SEMINAR EDUCATION			ON SITE COMM.			WEDNESDAY LUNCHEON	 	
SPORTING CLAY EVENT	  		TURF BOWL LUNCH			QR	 	
WELCOME			WOMEN IN TURF			ASST. SUPT. RECEPTION	 	
MONDAY AND TUESDAY SEMINAR LUNCHEON	   		GRAND PRIZE 27 HOLE CHALLENGE			MBCC PARKING	   	
SOCIAL MEDIA			SEMINAR REFRESHMENT BREAKS			DEACON GS3		
TECHNOLOGY STATION	  		WEDNESDAY GENERAL SESSION					
			A STEP AHEAD			E-NEWSLETTER		



# ASSISTANT SUPERINTENDENT RECEPTION

SUNDAY, NOVEMBER 16

6 - 9 pm

**RIPTYDZ OCEANFRONT GRILL &  
ROOFTOP BAR**

1210 N Ocean Blvd  
Myrtle Beach, SC

In Partnership with



*Complimentary: Please register to attend for planning purposes.*

*\*Must be a current assistant superintendent to attend*



## BLUE RIDGE BREAKFAST

MONDAY, NOVEMBER 17

7 - 10 am

**MAMMY'S KITCHEN**

1010 NORTH KINGS HWY., MYRTLE BEACH, SC  
(Located right next to the Old Pavilion Parking Deck)

**FREE and OPEN TO ALL CONFERENCE AND SHOW  
ATTENDEES!!!! NOT JUST BLUE RIDGE MEMBERS!!!!**

Sponsored by  
Tom Porter - J.K. Morro





# MONDAY GENERAL ACTIVITIES

MONDAY, NOVEMBER 17, 2025

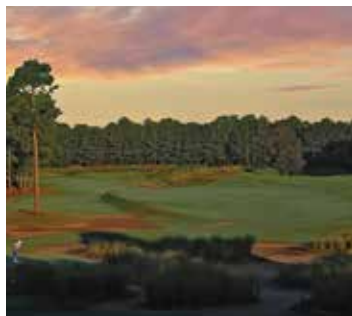


<b>7 am - 4:30 pm</b>	Conference & Show Registration	Myrtle Beach Convention Center Hall of Fame
<b>8 am - 4 pm</b>	Seminars	
<b>9 am</b>	Sporting Clay Event	Backwoods Quail Club Georgetown, SC
<b>11 am</b>	Golf Championship	Caledonia Golf & Fish Club Prestwick Country Club True Blue Golf Club Wachesaw Plantation Club
<b>11:30 am - 12:30 pm</b>	Seminar Luncheon <b>MENU</b> <b>Carolina BBQ Buffet</b> Southern Creamy Potato Salad Creamy Home-Made Coleslaw Fire Braised Chicken with Carolina Gold BBQ Sauce Creamy Macaroni and Cheese Slider Rolls Seasonal Fruit Cobbler with Fresh Whipped Cream Iced Water and Tea Station	Ballroom DE (Monday Seminar Registrants Only)  Lunch is included with two half-day seminars on Monday  In Partnership with      
<b>6 - 9 pm</b>	Exhibitor Move-In for Large Equipment	<ul style="list-style-type: none"> <li>Water Station in luncheon area of trade show floor</li> <li>Sodas can be purchased on Level 2 of the Convention Center, right off escalator near restrooms</li> </ul>



# GOLF CHAMPIONSHIP INFORMATION

## MONDAY, NOVEMBER 17, 2025



### Caledonia Golf & Fish Club

Since opening to the public in January 1994, Caledonia Golf and Fish Club has rapidly gained a reputation as one of the premier courses in America. It is the first solo design of late, great golf course architect Mike Strantz. Strantz approached his assignments in a unique way—as an artist, rather than an engineer. His exceptionally creative eye is reflected in the way he sculpted Caledonia's 18 holes, with large, creative greens guarded at times by ponds, streams and imposing bunkers. The same sort of majestic live oak that overhang the entryway into Caledonia similarly frames many of the shots at Caledonia, giving the course a rustic feel. Thousands of annual and semiannual flowers bloom every year throughout the property, further adding to the beauty of the experience. A round of golf at Caledonia has been described as a "beautiful day in a floral nature park."

**Host:**  
**Jackson E. Clemons, Jr.**  
*Director of Agronomy*



### Prestwick Country Club

Nestled in the heart of the Myrtle Beach golf mecca, sits prestigious Prestwick Country Club. Prestwick has the look and feel of a private club, but is open to the public. The course was designed by Pete & P.B. Dye and includes some of the most beautifully sculpted holes in the area. This Par 72 beauty plays over 7000 yards from the Black Tees. But Prestwick has 6 sets of tees to fit every golfer's game.

Prestwick Country Club was recognized in Golfweek's 2025 Best Courses You Can Play in the Carolinas. This prestigious recognition highlights the club's commitment to providing an exceptional golf experience for both members and visiting players.

Prestwick combines championship-caliber challenges with breathtaking Lowcountry scenery. Known for its strategic layout, dramatic bunkering, and pristine conditions, Prestwick continues to earn praise from golfers and critics alike.

**Host: Paul L. Kaufman, Jr.,**  
*Golf Course Superintendent*



### True Blue Golf Club

True Blue Golf Club is annually ranked in Major Golf Publications like Golf Magazine, Golfweek and other "Top 100 Lists" True Blue Golf Club represents the class of the expansive golf offerings on The Waccamaw Golf Trail located just minutes south of central Myrtle Beach in Pawleys Island. The dramatic, fun layout is known for its vast fairways, undulating greens and impressive elevation changes. The rolling terrain and native vegetation of this "Nationally Recognized" Mike Strantz design makes for one of the most spectacular settings in golf. And with an 18-acre practice facility, fully-stocked pro shop and inviting grill room, True Blue Golf Club is a must-play on any visit to "The Golf Capital of the World" Myrtle Beach, South Carolina. All are welcome here!

**Host: Kevin Thompkins,**  
*Golf Course Superintendent*



### Wachesaw Plantation Club

Wachesaw was crafted by internationally acclaimed Tom Fazio, Wachesaw was designed to take advantage of the site's inherent beauty and interesting elevation changes not typically found in the Carolina Low Country. The unexpected rolling fairways are thoughtfully designed to weave through the giant oaks strategically placed on the course. This unique setup provides golfers of varying skill a memorable and challenging, yet enjoyable experience.

Come experience the pace of play and privileges that can only be offered at a true private club. "Our goal is to provide Members and their Guests an unparalleled experience through a commitment to gracious hospitality and exemplary service. New members will quickly achieve a sense of belonging due to the atmosphere the staff has created."

**Host: Scott Fretz**  
*Golf Course Superintendent*

# GOLF CHAMPIONSHIP INFORMATION

## MONDAY, NOVEMBER 17, 2025



In Partnership with



### Golf Schedule

#### 10 - 11 am CHECK- IN

All golfers must check in at the Carolinas GCSA Registration Desk at assigned course prior to the shotgun start.

#### 11 am SHOTGUN START

### Course Assignments

All course assignments will be determined one week prior to the event. Course assignments will be posted on the home page of the website, [www.carolinasgcsa.org](http://www.carolinasgcsa.org) and emailed on November 12, 2025.

#### Championship Flight A & B - Medal Play Tournament

- 1st, 2nd, 3rd place Gross & Net
  - Overall Gross
  - Carolinas GCSA Superintendent Member Champion (Class A, B and C eligible)
  - Overall Gross Carolinas GCSA Affiliate Member Champion
- (Limited to first 100 entries for purpose of flighting and speed of play)*

#### Senior Division (age 50 and up) - Medal Play Only

- 1st Place Gross & Net
- Will play in senior flight from senior tees

#### Four Ball Flights A & B

- 1st, 2nd, 3rd Place Gross & Net
  - Two Person Team Event
  - Number of flights based on number of entries
- (Limited to first 50 team entries)*

#### Captain's Choice Flights A & B

- 1st Place Gross & Net
  - Four Person Captain's Choice Team Event
- (Limited to first 75 paired entries)*

#### Tee Gift:

Each participant will receive a 8 oz. Stanley Easy Fill Wide Mouth Flask



#### Long Drive:

Apple Watch 1 per course  
Series 6 GPS Model



#### Closest to the Pin: DJI Mini 2 Drone



#### Hole in One

- Club Car Carryall 502 utility vehicle, 1 per course
- Designated to winning individuals home course/club. Winner will receive use of the vehicle for one year.
- Class A, AA, B & C Members Eligible





# GOLF CHAMPIONSHIP GENERAL RULES



## ELIGIBILITY

Players must be registered to attend or participate in the Carolinas Golf Course Superintendents Conference & Show. Superintendents and affiliates will play in mixed foursomes. Contestants will select to play in Medal Play, Senior Medal Play, Four Ball\*, or Captain's Choice\*\* Division.

*\*Four Ball teams sign up with one partner on registration form. If you would like to play in four ball, and do not have a partner, the Carolinas GCSA will assign a partner.*

*\*\*Captain's Choice teams may sign up with THREE partners on the registration form. If you would like to play Captain's Choice, you do NOT have to sign up with a partner, this is just an option.*

## TOURNAMENT FORMATS

### MEDAL PLAY

- This is a stroke play individual 18-hole golf event.
- Each contestant will play his or her own ball out on each hole and report their score.
- There will be two flights divided by handicap once field is set.

### SENIOR MEDAL PLAY

This is identical to the Medal Play with these exceptions: Only contestants over age 50 are eligible; Only 1st place gross and net will be awarded in this flight; Senior players will play from forward tees except on holes designated for long drive and closest to the pin contests.

### FOUR BALL

- This is a two person team event.
- Both players will complete the hole and then select the better of their scores to report for their score on each of the 18 holes.
- There will be two flights divided by combined team handicap once field is set.
- Each team will play alongside another team selected by the Carolinas GCSA.

### CAPTAIN'S CHOICE

- This is a four person team event.
- All four players will execute their desired shot from the teeing ground, then select the best respective shot, and repeat that process until the ball is holed.
- Only one team score per hole will be counted.
- There will be two flights divided by combined team handicap once field is set.

**LOCATION:** The tournament will be played at Caledonia Golf and Fish Club, Prestwick Country Club, True Blue Golf Club and Wachesaw Plantation Club.

**ENTRY DEADLINE:** First 400 players will be accepted. No entries will be accepted after the first 400 players or **October 31, 2025**, no exceptions.

**CANCELLATION POLICY:** The Carolinas GCSA must be notified of any cancellations by Monday, **November 10, 2025** in order to receive a refund.

## GOLF CHAMPIONSHIP COMMITTEE

Eric Dusa, CGCS, White Plains Golf Club, Pageland, SC  
Jeremy Boone, CGCS, Springdale Resort, Canton, NC

Any questions should be directed to Tim Kreger, Executive Director, Carolinas GCSA at 800-476-4272.

# SPORTING CLAY EVENT

## MONDAY, NOVEMBER 17, 2025

In Partnership with



## SPORTING CLAY SCHEDULE

### IMPORTANT: NOTE TIME CHANGE

9 - 10 am ..... REGISTRATION/CHECK IN

10 am - 12 pm... SHOOT

12 - 1:30 pm ..... LUNCH & AWARDS

## LUNCH MENU

- Pileau (Chicken Bog)
- Green Beans
- Coleslaw
- Dessert
- Tea

### Sporting Clay Gift:

White microfiber towel for gun cleaning



2024 Sporting Clay champion Adam Cribbet, Old Tabby Links at Spring Island, with runner-up, Adam Charles, The Preserve at Verdae



Affiliate sporting clay champion, Briar Spivey, W. P. Law, with runner-up, Jason Gray, Carolina Fresh Farms



## REGISTRATION FEE

### Member Pricing

- Early Bird \$75 (Prior to October 1)
- Advanced \$100 (October 1 - October 31)
- Standard \$115 (After October 31)

### Non-member Pricing

- Early Bird \$105 (Prior to October 1)
- Advanced \$130 (October 1 - October 31)
- Standard \$145 (After October 31)

Includes 100 target sporting clay event; lunch and prizes. Pre-registration is required. Limited to 70 shooters. Please provide a partner name as pairings will be assigned in advance.

## ENTRY DEADLINE

Pre-registrations must be received by Friday, October 31, 2025.

## CANCELLATION POLICY

The Carolinas GCSA must be notified of any cancellations by Monday, November 10, 2025 in order to receive a refund.

## ELIGIBILITY

Shooters must be registered to attend or participate in the Carolinas Golf Course Superintendents Association Conference & Show.

## LOCATION

Back Woods Quail Club, 647 Hemmingway Lane, Georgetown, SC

Located just off SC 51 south at the intersection of SC 24 and SC 41/51, Georgetown, SC (Approximately 1 hour from the Myrtle Beach Convention Center).

## GENERAL RULES

Shooters must provide their own ammunition and hearing and eye protection (standard ear plugs and safety glasses). Ammunition, hearing and eye protection are available for purchase at the gun club. For safety reasons, no shot larger than 7 ½ can be used at the gun club (for example #1, #2, #3, #4, #5, and #6 are NOT allowed). Back Woods Quail Club will provide gun rental for those who need one.

# SEMINAR LINE-UP IN DEPTH

MONDAY, NOVEMBER 17, 2025 • 8–11:30 am



# 1

## Advanced Management of Ultradwarf Bermudagrass Golf Greens and Fairways



**Bert McCarty, Ph.D.**

*Professor Emeritus  
Clemson University*



**Joe Roberts, Ph.D.**

*Associate Professor and Extension  
Specialist of Turfgrass Pathology and  
Nematology Clemson University*

The conversion by many golf courses to ultradwarf bermudagrass cultivars for golf greens means creating a completely new plan for successful management while also considering the diseases and nematode infection and infestations factors that can significantly limit success. Attendees will walk away with a better understanding of the agronomic, and physiological management needs of ultradwarf bermudagrass and how to identify potentially devastating root and crown diseases and nematode problems. Topics discussed include: Construction and cultivar considerations, sunlight requirements, fertility programs, thatch/mat/OM management options, watering strategies, providing winter color plus spring transition trends, preventing winter damage, diseases of importance, nematode diagnostic guidelines, disease and nematode management strategies, and holistic case studies at various budgeted courses.



**GCSAA Ed Points: .35**



**PESTICIDE CREDITS**  
SC-3 hrs. NC-2 hrs. GA-3 hrs.

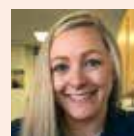
# 2

## (NEW) Practical Strategies for Managing Insect Pests for Cool-Season Turfgrasses



**Zee Ahmed, Ph.D.**

*Assistant Professor, Turf and  
Ornamental Entomology  
Clemson University*



**Terri Billeisen, Ph.D.**

*Extension Associate, Department of  
Entomology and Plant Pathology  
NC State University*

Insect-related turf damage cost Carolina's golf courses thousands of dollars in 2024, from lost playability to expensive reseeding and pest control. As these pressures continue, it's more important than ever for golf course superintendents to stay ahead of seasonal outbreaks and make informed, cost-effective decisions. This seminar offers a practical, grounded look at the insect pests most affecting cool-season turf, beginning with a brief overview and then focusing on species that posed serious challenges last year, including armyworms, chinch bugs, and annual bluegrass weevils (ABW). Whether you're new to pest scouting or looking to refine your approach, this session shares useful strategies and insights to help you plan proactively, protect turf quality, and stretch your budget further.



**GCSAA Ed Points: .35**



**PESTICIDE CREDITS**  
SC-3 hrs. NC-3.5 hrs. GA-2 hrs.



## 3 Spray Masters: Making the Most Out Of All You Apply!



**Travis Gannon, Ph.D.**  
Professor of Crop Science  
NC State University

Applications of plant protectants through turfgrass sprayers are an integral component of golf course management programs, and considerable time and energy is invested in product selection with regard to safety, efficacy, and turfgrass tolerance. However, it is also important to consider the effects of product formulation and mode of action as well as application factors such as nozzle selection, spray volume, and water quality. This session will cover the fundamentals behind improving product performance by extracting important information from product labels, considering nozzle selection and spray volume, and testing the pH and water quality of the spray solution. Each of these factors can play an important role in success, particularly in areas where superintendents rely on poor-quality ground water and/or reclaimed water.



**GCSAA Ed Points: .35**



**PESTICIDE CREDITS**  
SC-3 hrs. NC- 3.5 hrs. GA-2 hrs.

## 4 (NEW) Pain in the Grass: POA Management in the Southeast



**Jim Brosnan, Ph.D.**  
Professor of Plant Sciences  
University of Tennessee

This presentation will provide attendees a comprehensive look at how to control *Poa annua* on golf courses in the southeast region. Attendees will learn to develop modern control programs that make use of diversified herbicide chemistry, plant growth regulators (PGRs), as well as timely cultural practices. Strategies for controlling *Poa annua* on putting greens, short-cut surfaces (approaches/collars, fairways, tees), and rough will be discussed in detail. Attendees will learn about the benefits of herbicide resistance testing to better steward investments made in herbicide applications, as well as best practices for using new herbicides labeled for *Poa* control including Stayguard, StriCore, and others. Additionally, this presentation will discuss how agronomic factors such as soil nutrition, organic matter content, and cart traffic management can be used to better support programs implemented for *Poa* control.



**GCSAA Ed Points: .35**



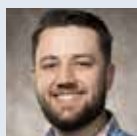
**PESTICIDE CREDITS**  
SC-3 hrs. NC-3.5 hrs. GA-3 hrs.

# SEMINAR LINE-UP IN DEPTH

MONDAY, NOVEMBER 17, 2025 • 8–11:30 am



## 5 (NEW) Understanding Turfgrass Fungicides



**Wendell Hutchens, Ph.D.**  
*Assistant Professor of Turfgrass Science  
University of Arkansas*



**Richard Latin, Ph.D.**  
*Professor Emeritus  
Purdue University*

A comprehensive understanding of fungicides will lead to better disease control decisions. This interactive seminar offers real world scenarios to explain how fungicides work, why fungicides work, and why (sometimes) they do not work. Although this seminar will not focus on lists of diseases and fungicides, questions about specific products for turf disease control are welcome and are often addressed during the general discussion.

Specific topics include:

- Fungicide movement in turf: How do fungicides move in turf plants and in the turf profile—and why is that important—especially for root diseases?
- Fungicide mode of action: How do fungicides work on turf pathogens and how can the targeted scheduling of fungicide applications provide optimum control?
- Fungicide resistance: How do resistant populations evolve and how can we avoid rapid shifts towards resistance?
- Factors affecting fungicide performance: How do our management decisions affect disease pressure and fungicide efficacy over time?



**GCSAA Ed Points: .35**



**PESTICIDE CREDITS**  
SC- 3 hrs. NC- 3.5 hrs. GA - 3 hrs.

## 6 Troubleshooting and Diagnosing Turf Issues!



**Lee Butler**  
*Extension Coordinator of Entomology  
and Plant Pathology  
NC State University*



**Jim Kerns, Ph.D.**  
*Professor and Extension Specialist of  
Turfgrass Pathology  
NC State University*

When turf starts to decline, prompt and accurate problem diagnosis can make the difference between a minor problem and major damage. This seminar will review the tools and services that are available to assist golf course superintendents in problem diagnosis, with emphasis on fungal diseases, nematodes, nutritional problems, abiotic disorders, and chemical injury. Case studies of real-world problems will be analyzed to provide experience in using the tools and services available. Attendees will learn how to implement the troubleshooting method for problem solving and differentiate between abiotic and biotic causes of turfgrass decline.

Attendees will learn how to utilize the tools and resources available for diagnosing the causes of turfgrass decline and interpret reports from plant, soil, tissue, and nematode analysis laboratories. Finally, attendees will learn how to comprehend the art and science of turfgrass disease diagnosis. Without knowledge of problem diagnosis, turfgrass managers will continually struggle with development of successful pest management strategies.



**GCSAA Ed Points: .35**



**PESTICIDE CREDITS**  
SC- 3 hrs. NC- 3.5 hrs. GA - 2 hrs.

# SEMINAR LINE-UP IN DEPTH

MONDAY, NOVEMBER 17, 2025 • 12:30–4 pm



Seminar Education Partner

## 7

### Making Herbicides Work or Why do they Sometimes Fail?



**Travis Gannon, Ph.D.**  
*Professor of Crop Science*  
*NC State University*



**Bert McCarty, Ph.D.**  
*Professor Emeritus*  
*Clemson University*

As professionals, we are constantly asked why herbicides do not work to the level expected. Many times, human error is involved in terms of misapplication timing, application method, not understanding how a particular is designed to work, or using the wrong product(s). We will cover PRE and POST emergence products, how they are supposed to work, and understand reasons why they might not work as expected. We will also cover herbicide resistance, its occurrence, and what measures can be taken to avoid or manage existing resistant weed biotypes. Numerous examples will be covered of all topics with time for questions and in-depth discussions.



**GCSAA Ed Points: .35**



**PESTICIDE CREDITS**

SC-3 hrs. NC - 3.5 hrs. GA - 3 hrs.

## 8

### (NEW) From Selection to Perfection: Science – Driven Bunker Success



**Brian Gietka**  
*Agronomist, East Region*  
*USGA Green Section*



**Chris Neff**  
*Agronomist, East Region*  
*USGA Green Section*

Bunker performance depends on more than just good sand. This seminar covers how to select the right materials, prevent washouts and contamination, and apply proven installation and maintenance practices. Learn from lab data, case studies, and USGA insights to ensure long-term success and enhance the playing experience for your golfers.



**GCSAA Ed Points: .35**



**PESTICIDE CREDITS**

SC-0 hrs. NC-0 hrs. GA-0 hrs.



# SEMINAR LINE-UP IN DEPTH

MONDAY, NOVEMBER 17, 2025 • 12:30–4 pm



## 9

### (NEW) Smarter Spraying: Mapping Pests with GPS, Sensors, and Drones



**Wendell Hutchens, Ph.D.**

*Assistant Professor of Turfgrass Science  
University of Arkansas*



**David McCall, Ph.D.**

*Associate Professor,  
Turfgrass Pathology  
Virginia Tech*



**Ken Rost, CEO**

*Frost Inc.*

Autonomation and robotics are the future of golf course and turfgrass management. Recent technological advancements have significantly increased adoption of these technologies by the turfgrass industry. With advanced GPS and RTK systems, golf course superintendents can now begin to transition to autonomous technology. The application of drones for real-time sensing and pesticide applications along with autonomous mowers will completely change the way courses are managed over the next decade. This seminar will provide attendees with the necessary information to begin this technological transition.



**GCSAA Ed Points: .35**



**PESTICIDE CREDITS**  
SC-0 hrs. NC-0 hrs. GA-0 hrs.

## 10

### (NEW) Advancing Turf Health Through Microbiome and Ecological Practices



**Zee Ahmed, Ph.D.**

*Assistant Professor,  
Turf and Ornamental Entomology  
Clemson University*



**Joe Roberts, Ph.D.**

*Assistant Professor and Extension  
Specialist of Turfgrass Pathology  
Clemson University*

In recent years, golf course management practices have shifted to include more environmentally conscious strategies grounded in biological control and microbiome research. While more options are becoming available to managers, there are still hurdles to consider when implementing new alternative strategies to improve turf health. This seminar will highlight several non-chemical strategies aimed at pest control and overall turf health, exploring both scientific progress and practical applications that support this movement. From utilizing microbial-based pest control to incorporating native wildflowers and strategically placed trees, golf courses can enhance habitats for pollinators and natural enemies of pests enhancing recognition as environmentally-friendly destinations. We'll discuss how microbiome-based approaches are contributing to reduced chemical reliance, share what we're currently implementing, and explore ways golf course managers, researchers, and community partners can engage and benefit. This is a valuable opportunity to exchange ideas and advance sustainable stewardship across golf courses.



**GCSAA Ed Points: .35**



**PESTICIDE CREDITS**  
SC-3 hrs. NC- 0 hrs. GA-3 hrs.

# 11

## Advanced Weed Management - Cool Season Turfgrasses



**Jim Brosnan, Ph.D.**  
Professor of Plant Sciences  
University of Tennessee



**Matt Elmore, Ph.D.**  
Associate Extension Specialist  
Rutgers University

This seminar will detail weed management strategies for cool-season turf in the Carolinas. Weed control in creeping bentgrass greens will be discussed with an emphasis on Poa Annua, Goosegrass, and crabgrass. Also included will be weed management in cool-season fairways, tees, roughs, etc. Weed management with new herbicides will be included as well as new uses of older herbicides. New and emerging weed problems will also be discussed.



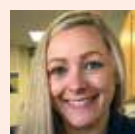
**GCSAA Ed Points: .35**



**PESTICIDE CREDITS**  
SC-3 hrs. NC- 3.5 hrs. GA-3 hrs.

# 12

## You Pick the Pests: Turf Insect Management



**Terri Billeisen, Ph.D.**  
Extension Associate, Department of  
Entomology and Plant Pathology  
NC State University

In You Pick the Pests, participants will be voting on their top insect pests and priority areas. This seminar will address the top selected turfgrass insects and review biology, monitoring and management for each. Particular focus will be given to successful management approaches for cost-effective and environmentally-sound control. We will also review life cycle stages and how they can influence product selection and application timing.



**GCSAA Ed Points: .35**



**PESTICIDE CREDITS**  
SC-3 hrs. NC- 3.5 hrs. GA-3 hrs.



# Transform your Turf with GRIGG Rezadone: The Ultimate Thatch and Black Layer Solution

GRIGG Rezadone leverages advanced, patent-pending microbe technology to optimize environmental conditions for microbial longevity and activity, ensuring thorough organic matter decomposition.

Elevate Your Turf Care Strategy  
[www.grigg.co](http://www.grigg.co)







# WE HAVE THE EDGE

New Life Turf is the leading licensed supplier of new and improved turf varieties all grown on fumigated soil and customized to meet your specifications.

## Our Turf

TifEagle TifDwarf Tifway 419 TifGrand Tahoma 31  
Diamond Zoysia Palisades Zoysia Cavalier Zoysia

## Our Services







Installation Sprig Planting Greens Renovation



# TUESDAY GENERAL ACTIVITIES

## TUESDAY, NOVEMBER 18, 2025



<b>7 am - 8 pm</b>	Registration Open	Hall of Fame
<b>7 am - 2 pm</b>	Exhibitor Move-In	Exhibit Hall
<b>7 am</b>	Exhibitors Refreshment Breaks	<ul style="list-style-type: none"> <li>Water Station in luncheon area of trade show floor</li> <li>Coffee and Cream Starbucks, Sheraton 2nd Floor is open 6:30am - 11am</li> <li>Sodas can be purchased on Level 2 of the Convention Center, right off escalator near restrooms</li> </ul>
<b>11:30 am - 12:30 pm</b>	<b>Seminar Luncheon</b>  <b>MENU</b> <b>A Taste of Italy Buffet</b> Classic Caesar Salad with Parmesan Herb Croutons Italian Pasta Salad Meatballs Pomodoro Meat Lasagna Garlic Bread Lemon Bars Iced Water and Tea Station	<b>Ballroom DE</b> <i>Lunch is included with two half-day seminars on Tuesday</i>  <i>In Partnership with</i> <div style="display: flex; justify-content: space-around; align-items: center;">   </div> <div style="display: flex; justify-content: space-around; align-items: center;">   </div>
<b>1 pm</b>	<b>Turf Bowl Participant Luncheon</b>	<b>Ballroom E</b> <i>In Partnership with</i> 
<b>2 - 4 pm</b>	<b>Carolinas GCSA Student Chapter Turf Bowl</b>	<b>Ballroom D</b> <i>In Partnership with</i> 
<b>4 - 4:30 pm</b>	<b>Student Question and Answer with Assistant Superintendents / Job Fair</b>	<i>Immediately following turf bowl in Ballroom D</i>
<b>4 - 8 pm</b>	<b>Carolinas Night</b>	Exhibit Hall
<b>3:30 - 7 pm</b>	<b>Trade Show Open</b>	Exhibit Hall
<b>7 - 8 pm</b>	<b>Women in Turf</b>	Vereens booth #2211



# CAROLINAS GCSA STUDENT CHAPTER TURF BOWL

2 - 4 PM • BALLROOM D

*In Partnership with*



You could think of it as a kind of pre-draft combine for future golf course superintendent talent or maybe a reimagining of Jeopardy for turfgrass junkies. Whichever you prefer, the Carolinas GCSA Student Turf Bowl brings the together the best of the next generation and puts them to the test.

The annual quiz for teams of students from turf programs across the region has grown into a showcase event at Conference and Show. Using a fast-paced Q&A format hosted Chris Vincent, CGCS, the Turf Bowl seems to draw a larger crowd every year.

Among those paying close attention are superintendents looking to spot someone they might like to hire. With dozens of students testing their knowledge in a competitive environment, the Turf Bowl offers the chance for unique insight into how next summer's intern might perform under pressure.

And make no mistake, there is pressure. With the fate of your teammates and school pride on the line, it takes some confidence, not just smarts, to come up with an answer and campaign for it in the heat of the moment.

The Carolinas GCSA greatly appreciates the continued support of The Aquatrols Company in helping make this event possible.



Horry-Georgetown's Student Turf Bowl team, standing, from left - Professor Charles Granger, Ethan Williams, Max Fieber, Professor James Huntoon, James Furman, Dravin Dixon, Grayson Long, Lane Roberts and Chris Vincent, of The Aquatrols Company. Kneeling - Jake Collins, Bryson Hardin and Pasquale Sullivan





# SEMINAR LINE-UP IN DEPTH

TUESDAY, NOVEMBER 18, 2025 • 8–11:30 am



## 13

### Ultimate Weed Control Guide – PANEL



**Moderator: Bert McCarty, Ph.D.**

*Professor Emeritus  
Clemson University*



**Panelists: Jim Brosnan, Ph.D.**

*Professor of Plant Sciences  
University of Tennessee*



**Matt Elmore, Ph.D.**

*Associate Extension Specialist  
Rutgers University*



**Travis Gannon, Ph.D.**

*Professor of Crop Science  
NC State University*

Come participate in a rare, one-of-a-kind panel discussion by the world's top turfgrass weed specialists. Specialists will cover the latest management strategies for the most troublesome weeds in turf such as Poa, goosegrass, nutsedge/kyllinga, Va. buttonweed, doveweed as well as how herbicide resistance is changing the ways the industry should address these. Weed resistance has reached epidemic status and this panel will cover the history of resistance development, how to integrate weed life cycles, environmental factors affecting weed growth and occurrence, plus chemical and cultural control in developing a holistic weed management program. Panelists will also discuss ways to maximize oxadiazon use with the impending acreage use restriction set for 2025. Come with your questions and interact with colleagues on ways to maximize the efficiency of weed control strategies. No boring PowerPoint presentations, rather, panelists and participants interacting to provide solutions to complex issues.



**GCSAA Ed Points: .35**



**PESTICIDE CREDITS**

SC-3 hrs. NC- 3.5 hrs. GA-3 hrs.

## 14

### All the Forms of Phosphorus – Why You Should Care!



**Beth Guertal, Ph.D.**

*Project Director, CEMARCH  
Kansas State University*

We often think of phosphorus as 'just' a fertilizer nutrient, but in different forms (phosphite, anyone?) applied P can also be a fungicide. Excessive P can also affect your Poa annua populations, which in turn could affect your weed control and growth regulator applications. We will tackle all of this in a seminar on P forms - which do what, and how you can best apply (rates, sources etc etc) for better turfgrass and a protected environment.



**GCSAA Ed Points: .35**



**PESTICIDE CREDITS**

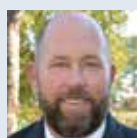
SC-3 hrs. NC-3.5 hrs. GA-2 hrs.

# 15

## Being an Effective Superintendent.....It's Not All About Growing Grass!



**Don Garrett, Jr., CGCS**  
Golf Course Superintendent,  
The Walker Course at Clemson  
University



**Jim Huntoon**  
Professor, Golf & Sports Turf  
Management  
Horry-Georgetown Technical College

When you think of a Golf Course Superintendent, you automatically think about grass. However, there is so much more to becoming an effective superintendent. This seminar will teach you the importance of professionalism, advocacy, career advancement, continuing education, communication, relationships, and social media to accelerate your transition into a superintendent position or next role in the industry. This seminar is geared towards assistant superintendents, new superintendents, AITs and students. You will gain a plethora of tips for success to help you to better yourself in your career.



**GCSAA Ed Points: .35**



**PESTICIDE CREDITS**  
SC-0 hrs. NC-0 hrs. GA-0 hrs.

# 16

## How to Stay Cool When Cool-Season Putting Greens Decline!



**Lee Butler**  
Extension Coordinator of Entomology  
and Plant Pathology  
NC State University



**David McCall, Ph.D.**  
Associate Professor  
Turfgrass Pathology  
Virginia Tech

This seminar will focus on the identification and management of diseases and abiotic disorders that affect cool-season turfgrass putting greens on golf courses in the Carolinas. The presenters will cover the major pathogens (fungi and nematodes) that cause these diseases. Attendees will learn when they are most likely to occur through monitoring weather data to precisely time preventative pesticide applications. In addition, attendees will learn how to approach long-term management using integrated pest management strategies and fungicide programming to ensure phenomenal control while mitigating the development of fungicide resistance. This seminar will also cover common abiotic issues that typically occur during stressful summer periods and how to differentiate them from actual diseases.



**GCSAA Ed Points: .35**



**PESTICIDE CREDITS**  
SC-3 hrs. NC-3.5 hrs. GA-3 hrs.

# SEMINAR LINE-UP IN DEPTH

TUESDAY, NOVEMBER 18, 2025 • 8–11:30 am



## 17 Getting to the Root Managing Soilborne Diseases - Warm Season Turfgrasses



**Jim Kerns, Ph.D.**

*Professor and Extension Specialist of  
Turfgrass Pathology  
NC State University*



**Joe Roberts, Ph.D.**

*Associate Professor and Extension  
Specialist of Turfgrass Pathology,  
Clemson University*

Management of turfgrass in the transition zone presents several challenges. Warm season turfgrasses in this area may be more adapted to endure the intense summer heat, but there are numerous pests that are of constant concern for degrading turfgrass playing surfaces. This seminar will focus on those diseases that attack below the turf surface and often unseen until the root system is often severely degraded. Pathogens that attack roots, stolons and rhizomes can be particularly challenging, but attendees will gain perspective in forecasting these issues in the future and how to spot the early symptoms before it's too late. We will cover the current state of knowledge regarding the cause, epidemiology, and management of mini-ring, take all root rot, spring dead spot, and pythium root rot. We will also discuss new research examining how pathogenic nematodes may be impacting these diseases. For each disease, we will cover the current state of cultural and chemical controls so that attendees can implement these tools in their 2025 programs..



**GCSAA Ed Points: .35**



**PESTICIDE CREDITS**  
SC-3 hrs. NC-3.5 hrs. GA-3 hrs.

## 18 Aging Putting Green, Root Zone and Management of Organic Matter



**Roch Gaussoin, Ph.D.**

*Professor Emeritus  
University of Nebraska-Lincoln*



**Jim Murphy, Ph.D.**

*Extension Specialist,  
Department of Plant Biology,  
Rutgers University*

The organic matter story, as told repeatedly, continues to evolve. What was, what is and what might be on the horizon will be discussed, focusing on how greens evolve over time and what the turfgrass manager can do to manage organic matter in sand-based root zones. One of the more common practices used to provide optimal playing conditions on putting greens is sand topdressing and cultivation. Beyond playability, the agronomic benefits of topdressing are plentiful. The layer of thatch is often problematic to plant health. We'll focus on strategies proven effective in managing organic matter accumulation on greens. Develop a better understanding of topdressing advantages/pitfalls, minimize surface & play disruption, and evaluate & apply research-based topdressing strategies.



**GCSAA Ed Points: .35**



**PESTICIDE CREDITS**  
SC-3 hrs. NC- 0 hrs. GA-3 hrs.



# 19

## (NEW) Elevating Excellence: Strategic Approaches to Leadership, Scheduling, and Wellness in Golf Course Management

### Session I: Taking Details to the Next Level



**Presenter: Steve Hamilton, CGCS**  
The Dunes Golf and Beach Club  
Myrtle Beach, SC

### Session II: Scheduling Your Way to Success



**Presenter: Chris Neff**  
Agronomist, East Region  
USGA Green Section

### Session III: Managing Your Time to Prevent Burnout



**Presenter: David Lee**  
Golf Course Superintendent  
Forest Creek Golf Club  
Pinehurst, NC

This seminar is designed to provide golf course superintendents and assistant superintendents with advanced strategies for enhancing operational effectiveness, leadership precision, and personal well-being. Through three focused sessions led by industry experts, attendees will gain practical insights into elevating attention to detail, optimizing scheduling practices, and managing time to mitigate professional burnout. The program is structured to foster both professional growth and sustainable performance in the demanding environment of golf course management. Whether you're managing a championship course or a local club, this seminar will equip you with tools to enhance your performance and well-being.



**GCSAA Ed Points: .35**



**PESTICIDE CREDITS**  
SC-0 hrs. NC-0 hrs. GA-0 hrs.

# 20

## (NEW) WATER: The Role Golf Courses Can and Should Play!



**Becky Grubbs Bowling, Ph.D.**  
Assistant Professor, Extension Specialist  
Turfgrass Science and Management  
University of Tennessee

This presentation will explore how shifting weather patterns, including changes in the timing and intensity of rainfall, impact water resource planning on golf courses. Emphasis will be placed on building more resilient turfgrass systems and highlighting the positive role golf courses can play in supporting infiltration, stormwater management, phytoremediation, and more. From long-term planning and day-to-day management to effective public communication and community engagement, this session will offer practical strategies for maximizing environmental and community benefits.



**GCSAA Ed Points: .35**



**AQUATIC CREDITS**  
SC-3 hrs. NC-0 hrs. GA-3 hrs.

# SEMINAR LINE-UP IN DEPTH

TUESDAY, NOVEMBER 18, 2025 • 8–11:30 am



# 21

## **(NEW)** Building Strong Foundations: Expectations and Communication Between Golf Course Superintendents and Assistant Superintendents



**Richard Brown**  
Golf Course Superintendent  
Florence Country Club  
Florence, SC



**Tim Carpenter, CGCS**  
Golf Course Superintendent  
Gaston Country Club  
Gastonia, NC



**Harrison Howe**  
Golf Course Assistant Superintendent  
Gaston Country Club  
Gastonia, NC



**Alex Tolbert**  
Golf Course Superintendent  
Orangeburg Country Club  
Orangeburg, SC

This seminar is designed to foster a deeper understanding of the dynamic relationship between golf course superintendents and their assistant superintendents. Attendees will gain valuable insights into mutual expectations, effective communication strategies, and how to prepare for future career advancement in the turf management industry.

### Seminar Goals:

- Strengthen professional relationships within golf course management teams
- Clarify expectations to improve job performance and satisfaction
- Equip assistants with the tools to grow into future superintendent roles



**GCSAA Ed Points: .35**



**PESTICIDE CREDITS**  
SC--0 hrs. NC- 0 hrs. GA-0 hrs.



## Seminar Attendee Refreshment Breaks

- Water Stations available outside meeting rooms
- 7:30-8:30 am  
Coffee in Hall of Fame
- 9-10 am  
Sodas in Hall of Fame
- 1:30-2:30 pm  
Sodas in Hall of Fame



# SEMINAR LINE-UP IN DEPTH

TUESDAY, NOVEMBER 18, 2025 • 12:30 – 4:00 PM

## 22 Soil and Water Chemistry: Definitions, Discussions and (Things to) Do!



**Beth Guertal, Ph.D.**

*Project Director  
CEMARCH  
Kansas State University*



**Becky Grubbs Bowling, Ph.D.**

*Assistant Professor, Extension Specialist  
Turfgrass Science and Management  
University of Tennessee*

This seminar will cover the basics behind the chemistry and soil, water and their interactions. We will cover soil pH, cation exchange, and ions that matter in soil and water. For water, the issues of electrical conductivity, salinity, sodicity and bicarbonates/carbonates will be discussed - how do we measure these? What is too much? Too little?

And finally - we will cover mitigation and remediation - can these issues be fixed, and if yes, how? We'll define, discuss the numbers, and offer possible solutions if there is an issue. This seminar will not discuss pesticide/water quality interactions (that's an entire topic in itself!).

### Key Topics Covered

- Soil Chemistry - What Do We Measure for 'Soil Chemistry'?
- Chemical Properties of Water and Why It Can Affect Soil
- Mitigation/Remediation



**GCSAA Ed Points: .35**



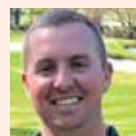
**PESTICIDE CREDITS**  
SC-0 hrs. NC-0 hrs. GA-0 hrs.

## 23 The Architecture of a Successful Renovation!



**Greg Hufner**

*Vice President  
Total Turf Golf Services*



**Chris Jordan**

*Director of Golf and Grounds  
Olde Eight Golf Club*



**Shane LeBaron**

*Director of Instruction and Part Owner  
Olde Eight Golf Club*



**Nick Mazella**

*Owner, Mazzella Partnership*



**Chris Neff**

*Agronomist, East Region,  
USGA Green Section*



**Drew Rogers**

*Golf Course Architect and Owner  
JDR Design Group*

This roundtable discussion delves into the essential elements and strategic planning necessary for revitalizing golf courses to meet modern standards and expectations. It will gather industry experts, including golf course architects, superintendents, project managers, agronomists, construction managers, and club officials, to explore best practices in redesigning and updating golf course layouts. Topics will include sustainability, aesthetic enhancements, technological integration, and player experience improvements, providing attendees with a comprehensive understanding of what constitutes a successful renovation project.



**GCSAA Ed Points: .35**



**PESTICIDE CREDITS**  
SC-0 hrs. NC-0 hrs. GA-0 hrs.

# SEMINAR LINE-UP IN DEPTH

TUESDAY, NOVEMBER 18, 2025 • 12:30 – 4:00 PM



## 24 Nematodes: Past, Present, and Future Directions for Management of these Elusive Pests!



**David McCall, Ph.D.**

*Associate Professor, Turfgrass Pathology  
Virginia Tech*



**Joe Roberts, Ph.D.**

*Assistant Professor and Extension  
Specialist of Turfgrass Pathology  
Clemson University*

Let's face it, whether you manage cool or warm season turfgrass here in the Carolinas, you have either heard or dealt with concerns over nematodes. Concerns of nematodes are growing, particularly in areas that are experiencing longer and hotter growing seasons revealing nematode damage in area in unsuspected areas. Many turfgrass managers experiencing these issues in new areas raise questions of have they been there all along, why is damage just starting to appear, and how can I manage or even prevent the damage from occurring in the future. Attendees of this seminar will gain a thorough understanding of the diversity of nematodes impacting turfgrasses managed throughout the Carolina's. We will cover symptoms of nematode damage, how to sample for different nematodes, how diagnosticians identify various groups, and how management tools can be implemented to circumvent loss of turf. The latest information on cultural and chemical control measures will be discussed for optimal application timing in 2025 programs.



**GCSAA Ed Points: .35**



**PESTICIDE CREDITS**  
SC-3 hrs. NC-3.5 hrs. GA-3 hrs.

## 25 Successful Bentgrass Management on Greens and Fairways!



**Matt Elmore, Ph.D.**

*Department of Plant Biology  
Associate Extension Specialist  
Rutgers University*



**Jim Murphy, Ph.D.**

*Extension Specialist  
Department of Plant Biology  
Rutgers University*

This seminar will describe the adaptation of bentgrass species to environmental factors including climate, soil, and exposure. Additionally, advances in improved varieties have altered how best to manage bentgrass. Practices such as mowing, irrigation, fertilization, topdressing and cultivation/aeration can influence thatch accumulation, disease severity, playing conditions, and the ability of the turf to compete with weeds including crabgrass, goosegrass, sedges, and annual bluegrass. Cultural and chemical strategies to control weeds in bentgrass will be presented. Additionally, factors that affect the ability of bentgrass to compete with annual bluegrass will be emphasized.



**GCSAA Ed Points: .35**



**PESTICIDE CREDITS**  
SC-3 hrs. NC-2 hrs. GA-3 hrs.



## 26 (NEW) Pesticides 101 – Fundamentals of Safe and Effective Pesticide Use in Turfgrass Management!



**Zee Ahmed, Ph.D.**

*Assistant Professor  
Turf and Ornamental Entomology  
Clemson University*



**Lee Butler**

*Extension Coordinator of Entomology  
and Plant Pathology  
NC State University*



**Navdeep Godara, Ph.D.**

*Assistant Professor  
Turf and Forage Weed Science  
NC State University*

Pesticides 101 offers a comprehensive introduction to the fundamentals of pesticide use in turfgrass management. This seminar will explore the major categories of pesticides—including herbicides, fungicides, and insecticides—and cover essential topics such as pesticide classifications, formulations, modes of action, and basic chemistry. Participants will learn about proper application techniques, label interpretation, safety practices, handling, storage, and disposal. The course will also address environmental behavior, fate after application, toxicity, and potential non-target effects. This is an ideal seminar for those seeking a solid foundation in the responsible and effective use of pesticides in turfgrass systems and will introduce resources available in the Carolinas that offer updated pesticide listings and guidance on their potential use against existing and upcoming invasive species.



**GCSAA Ed Points: .35**



**PESTICIDE CREDITS**  
SC-3 hrs. NC-3.5 hrs. GA-3 hrs.

## 27 Strategies for Goosegrass, Annual Bluegrass, Crabgrass, Doveweed and Other Growing Weed Problems!



**Jim Brosnan, Ph.D.**

*Professor of Plant Sciences  
University of Tennessee*



**Travis Gannon, Ph.D.**

*Professor of Crop Science  
NC State University*

Goosegrass has become the one of the most problematic weeds in turfgrass. With herbicide resistance and expanded geographic distribution, options for effective control are dwindling. Instructors will discuss goosegrass along with other growing weed issues such as doveweed, annual bluegrass, doveweed, and chamberbitter to understand the biology of these species and control options.



**GCSAA Ed Points: .35**



**PESTICIDE CREDITS**  
SC-3 hrs. NC-3.5 hrs. GA-3 hrs.

# SEMINAR LINE-UP IN DEPTH

TUESDAY, NOVEMBER 18, 2025 • 12:30 – 4:00 PM



## 28 Everything You Need to Know About Ultradwarf Bermudagrass! PANEL



**Moderator: David Lee**

*Golf Course Superintendent  
Forest Creek Golf Club  
Pinehurst, NC*



**Steve Hamilton, CGCS**

*Golf Course Superintendent  
The Dunes Golf & Beach Club  
Myrtle Beach, SC*



**Matt Jones, CGCS**

*Golf Course Superintendent  
Forsyth Country Club  
Winston Salem, NC*



**Kevin Lutz**

*Golf Course Superintendent  
Cabarrus Country Club  
Concord, NC*

This seminar will involve the participants in a full panel discussion and presentation of ultradwarf bermudagrass management of what works and what does not work. Successes and failures will be discussed, and participants will be provided with experience-based suggestions for management of the ultradwarf bermudagrass and their diseases.



**GCSAA Ed Points: .35**



**PESTICIDE CREDITS**  
SC-3 hrs. NC-3.5 hrs. GA-3 hrs.

## 29 (NEW) USGA Power Hour



**Jordan Booth, CGCS, Ph.D.**

*Senior Director  
Course Consulting Service  
USGA Green Section*



**Carson Letot, Ph.D.**

*GAP Program Coordinator  
USGA Green Section*



**Wesley Stewart, M.S.**

*Data Scientist  
USGA Green Section*



**Cole Thompson, Ph.D.**

*Turfgrass & Environmental Research  
USGA Green Section*



**George Waters**

*Assistant Director  
USGA Green Section*

This session will cover multiple topics in a fast-paced environment, structured to engage participation and provide take-home information for you and your team. USGA agronomists, scientists, and educators will lead six 30-minute sessions focused on data-driven aeration, water management, cutting edge USGA-sponsored research, and best practices for staff development and team building at your golf course.



**GCSAA Ed Points: .35**



**PESTICIDE CREDITS**  
SC-0 hrs. NC- 0 hrs. GA-0 hrs.

# 30 Aquatic Plant Management: An Introduction to Keeping Your Ponds Free of Unsightly Plants and Algae



**Matt Cutulle, Ph.D.**

*Assistant Professor of Weed Science  
Plant and Environmental Sciences  
Clemson University*



**Rob Richardson, Ph.D.**

*Professor and Extension Specialist  
Aquatic and Non-Cropland Weed  
Science, NC State University*

Whether ponds serve as visual focal point for your property or an irrigation source, aquatic weeds can interfere with the appearance and use of the waterbody. Using proper management techniques can keep these weeds at bay and allow full use of your water body. This seminar will give superintendents a complete overview of how to manage their aquatic resources including water quality, aquatic plant identification, and integrated best management practices for control of the major aquatic weed problems. Specific instruction on the newest aquatic herbicides, use of aquatic herbicides in irrigation sources, and management of marginal areas will be emphasized. An overview of relevant rules and regulations that apply to management of aquatic resources will also be covered.



**GCSAA Ed Points: .35**



**AQUATIC CREDITS**

SC-3 hrs. NC- 3.5 hrs. GA-3 hrs.

## MAJOR UPDATE THIS YEAR

### BADGE PRINTING FOR ATTENDEES AND EXHIBITORS WILL BE DONE ONSITE

#### BADGE PRINTING FOR ATTENDEES AND EXHIBITORS WILL BE DONE ONSITE

- A major update this year is the conversion to an electronic badge printing system.
- The old system of mailing printed badges to attendees is now gone, along with the pick-up of exhibitor badges onsite by individual or by packet.

NOW, everyone pre-registered for Conference and Show, exhibitors and attendees, will receive a unique QR code via email which they will scan on-site to print their badge. **EACH EXHIBITOR AND ATTENDEE MUST REGISTER ONLINE IN ADVANCE.**

**\*\* AVOID LINES - PRINT YOUR BADGE EARLY!!** Stop by the Sheraton before early am lines!



- Attendees at the host hotel, the Sheraton MBCC Hotel, adjacent to the convention center, will have the chance to print their badges in the hotel foyer when they check in beginning on Sunday, November 16. We will have scanners and printers set up near the internet café on the lobby level of the hotel. Be sure to pre register your all your attendees and exhibitors to receive your QR code for bade printing in advance. Our team will be onsite during normal registration hours you are used to for any onsite questions.

**\*\*\* BADGES PRINT ONLY ONE TIME - THERE WILL BE A FEE TO REPRINT ANY BADGES\*\*\***

**\*\*\* NO EXCEPTIONS AS THIS IS OUT OF STAFF HANDS \*\*\***

# CAROLINAS NIGHT ON THE TRADE SHOW FLOOR



**TUESDAY, NOVEMBER 18 ■ 4 – 8 PM**

**OPEN TO EVERYONE ON THE TRADE SHOW FLOOR**

**BAR**

## **BARS OPEN AT 4 PM**

AgStone LLC, booth #2610  
Tri-State Pump, booth #407  
(Wine, Beer, & Soda)

Cash bar for liquor will be available as well.

Water coolers will also be placed on the outside perimeter of the trade show floor.

**FOOD**

## **FOOD STATIONS OPEN AT 5 PM**

Green Resource, booth #1604  
NanoOxygen Systems, booth #1016  
Sod Production Services, booth #3101

## **COMPLIMENTARY DRINK TICKETS**

Available from

- AgStone LLC
- Green Resource
- NanoOxygen Systems
- Sod Production Services
- Tri-State Pump & Control, Inc.
- As well as the 27-hole challenge booths  
\*designated on the floor layout

*Additional drink tickets may be purchased from the registration desk onsite for \$10 each*

**IN PARTNERSHIP WITH**

**AGSTONE**

Booth #2610

**Green  
Resource**

Booth #1604

**tsp**  
Est. 1994

Booth #407

**NanoOxygen  
SYSTEMS**  
OXYGEN DELIVERED

Booth #1016

**RAPIDWATER®**  
TECHNOLOGIES

**TAHOMA 31**  
BERMUDAGRASS

Sod Productions Services  
Booth #3101



# WEDNESDAY EVENTS

## WEDNESDAY, NOVEMBER 19, 2025



### FELLOWSHIP BREAKFAST SPEAKER

#### Jeremy Boone, CGCS

Jeremy Boone, CGCS has experienced some ups and downs, professionally and personally. At one point, he found himself in the hardware business thinking his golf days were done and gone. But he kept the faith, along with his faith, and is now general manager and director of agronomy at Springdale Resort in Canton, NC. He is also back serving on the Carolinas GCSA board of directors.



At Springdale, he played a critical role helping his community endure a catastrophic flooding event that took six lives in 2022. And along with his club, he was at the forefront of recovery and fundraising efforts again in the wake of Hurricane Helene last fall.

To say Boone's heart in his job is to underplay things. His Cherokee lineage runs deep in the mountains of Western North Carolina, and he grew up and got his start in golf on the very course he now manages. His parents and his grandmother also worked there.

At this year's annual Fellowship Breakfast before the annual business meeting on Wednesday, November 19, Boone will share how those roots and his faith inspired his leadership and steered his path through tough times, and also through the good.

The annual Fellowship Breakfast is once again presented in partnership with NewLife Turf and Corbin Turf and Ornamental Supply.

### FELLOWSHIP BREAKFAST

*Complimentary to all registrants but please sign up in advance for food count guarantees.*

**6:45 AM - 7:45 AM**

*Ballroom D*

*In Partnership with*



### Traditional Breakfast Buffet

Market Display of Fresh Seasonal Fruits  
Fresh Baked Biscuits with Butter  
and Assorted Jellies  
Farm Fresh Scrambled Eggs  
Southern Style Grits  
Crisp Applewood Smoked Bacon  
Regular and Decaf Coffee  
Orange Juice  
Iced Water



### General Session Refreshment Break

- Water Stations across outside Ballroom E
- 7:45-8:45 am Coffee across from Ballroom E
- 9 am – 10 am Sodas outside Ballroom E

# EDUCATION SESSION

WEDNESDAY, NOVEMBER 19, 2025



Wednesday General  
Session Partner

**Ballroom E • Presiding - Alex Tolbert, President Carolinas GCSA**  
Orangeburg Country Club, Orangeburg SC

GCSAA Ed Points: .30

PESTICIDE CREDITS  
SC-1 hrs. NC-1 hrs. GA-2 hrs.

<b>8 am</b>	Welcome	<b>Alex Tolbert, President Carolinas GCSA</b> Orangeburg Country Club
<b>8:05 - 8:25 am</b>	GCSAA Updates and BMP Implementation	<b>Ralph Dain, Regional Representative</b> Golf Course Superintendents Association of America
<b>8:25 - 8:35 am</b>	Rounds4Research Update	<b>Ryan McClannon, Reynolds Park Golf Club</b> <b>Matt Jones, Forsyth Country Club</b>
<b>8:35 - 9:05 am</b>	Clemson University Research Update	Graduate Students <b>Grace Gable, Jason Todd</b>
<b>9:05 - 9:35 am</b>	NC State University Research Update	Graduate Students <b>Dylan Dean, Payton Perkinson</b> <b>Alexandra Veverka</b>
<b>9:35 - 10:45 am</b>	Panel Discussion on Turfgrass Weeds and Diseases	<b>Navdeep Godara, Ph.D., NC State University</b> <b>Travis Gannon, Ph.D., NC State University</b> <b>Jim Brosnan, Ph.D., University of Tennessee</b>
<b>10:45 - 11:00 am</b>	USGA Update	<b>Chris Neff, Agronomist, USGA</b> <b>Jordan Booth, Ph.D., Agronomist, USGA</b>
<b>11:00 - 11:15 am</b>	Distinguished Service Award Presentation	<b>Bob Farren, CGCS, Director of Golf Course Maintenance &amp; Ground Management,</b> Pinehurst Resort & Country Club
<b>11:15 - 11:30 am</b>	Business Meeting	<b>Presiding: Alex Tolbert</b> President Carolinas GCSA Orangeburg Country Club
<b>11:30 am - 2:30 pm</b>	Trade Show Open	Exhibit Hall
<b>2 pm</b>	27 – Hole Challenge Prize Giveaway	Exhibit Hall Stage Area near John Deere
<b>2:30 - 8 pm</b>	Exhibitor Tear Down	Exhibit Hall
<b>6 - 9 pm</b>	Distinguished Service Award Dinner	By Invitation Only The Dunes Golf and Beach Club
<p>In Partnership with</p> <div> </div>		



# Win a 5 day fishing trip to Panama!



Day 2: Journey to Playa Chumico

Day 4: Visit nearby towns

Day 1: Arrival

Day 3: Fishing and Exploring

Day 5: Departure



In Partnership with Ecological Improvements





#### Day 1: Arrival

As a guest of The Tuna Coast, expect VIP treatment from the moment you touch down at Panama City Airport. Dedicated transportation will be ready to take you to your hotel. We'll kick off our adventure with a delightful dinner at one of our favorite restaurants in preparation for the next day's travel.

#### Day 2: Journey to Playa Chumico

The following morning, we embark on our journey to Playa Chumico. We'll take a short flight from a small airport in Panama City to Pedasi, where you can explore the area before a brief 30-minute drive to Playa Chumico.

#### Day 3: Fishing and Exploring

Relax and immerse yourself in a day dedicated to fishing at Playa Chumico. Our boats will be fully equipped for our excursion, and for those interested, there's an option for spearfishing. You can look forward to a delectable dinner featuring the catch of the day.

#### Day 4: Visit nearby towns

The second day will offer an abundance of opportunities for fishing, exploration, and embracing Panama's laid-back lifestyle. Consider a visit to the nearby beach town, Playa Venao, where surfing, hiking, delicious restaurants, and a lively evening await.

#### Day 5: Departure

On our final day, we'll return to Panama City by flight. After arriving, take some time to unwind and wander through the historic district before your scheduled departure the following day.





In Partnership with



**JOHN DEERE**  
GOLF



**BEARD**  
EQUIPMENT CO.

## 27-HOLE CHALLENGE

The Carolinas GCSA is proud to present the 27-Hole Challenge to superintendents and assistant superintendents from ANY AFFILIATED GCSAA CHAPTER who registers for a FULL CONFERENCE PACKAGE. Complete the 27-Hole Challenge tour of the trade show floor and get to know the industry partners who help make this outstanding event possible.

27-Hole Challenge scorecards will be mailed to those who are pre-registered at the end of October. A replacement card can be picked up at the 27-Hole Challenge Booth #3509 during trade show hours if you do not receive it.

**Grand Prize Partner**  
See Details on Page 37-38



**Grand Prize: 2 Person Trip to Tuna Alley!!**

**2nd Prize: \$2,000**

**3rd thru 6th: \$500**

**7th thru 15th: Choice of assorted prizes**

**Next Generation Prizes:**

**1st Prize: \$1,000**

**2nd Prize: \$500**

**3rd and 4th Prize: Choice of assorted prizes**

Winner is responsible for any applicable taxes.

Grand Prize Partner: Ecological Improvement, Booth #2510. Winner will coordinate trip with owner Jack Moran.



## How to Play – NEW FOR 2025 ELIGIBILITY AND PRIZES!!

- 27-Hole Challenge participants must be registered for a FULL CONFERENCE PACKAGE and must be a Class A or B member of ANY affiliated chapter of GCSAA. Same applies for participants in the Next Generation 27-Hole Challenge, must be a Class C member of ANY affiliated GCSAA Chapter and registered for FULL CONFERENCE PACKAGE.
- 27-Hole Challenge scorecards may be picked up at the 27-Hole Challenge booth #3509 (inside John Deere booth) during normal trade show hours.
- The event will consist of 27 exhibiting company booths. A flag will mark each booth and participants must have their scorecard stamped at each of the designated booths.
- 27-Hole Challenge booths will be located at various sites throughout the exhibit area and will be designated on the exhibit hall directory provided on site.
- Score cards must be stamped during normal trade show hours on Tuesday and Wednesday. Scorecards must be turned into the 27-Hole Challenge booth #3509 by 1:30 pm on Wednesday, November 19th.
- All cards completed will all required stamps will be entered into the drawing for prizes.
- Participants must be present at the drawing, beginning 2 pm Wednesday, to be eligible to claim any prizes awarded. If not present, another name will be drawn immediately.



# GENERAL INFORMATION

## Badges and Admittance

Official Carolinas GCSA name badge must be worn at all times at the Myrtle Beach Convention Center.

Name badges will be checked upon entry to:

- Seminars on Monday and Tuesday
- Seminar Luncheons on Monday and Tuesday
- Trade Show Floor on Tuesday and Wednesday
- General Education Session on Wednesday

## Cancellation Policy

Conference and Show cancellation requests must be in writing and received by Monday, November 10, 2025 to receive a refund. A \$25 administrative fee will be charged for all full and/or partial cancellations. After this date, NO refunds will be made.

## Recommended Dress

The dress requirements for all Conference and Show events should either be golf casual or business casual.

- Golf Casual is defined as a nice pair of slacks and a collared or mock neck golf shirt.
- Business Casual is defined as a nice pair of slacks with a collared or mock neck shirt and a blazer or sport coat.
- Under no circumstances should denim jeans or caps be worn at Conference and Show events.

## Registration Options

Early Bird Fee Registration

**Deadline:** September 30, 2025, 11:59 PM EST

Advanced Fee Registration

**Deadline:** October 31, 2025, 11:59 PM EST

Standard Fee Registration

**Starts:** November 1, 2025, 12 am EST



## Complimentary Full Conference Registration

Complimentary registration will be offered to Carolinas GCSA Honorary, AA and Retired members, Educators, and Golf Course Owners. All complimentary registrations should call the office.

## Seminar Selections

Seminar descriptions can be found on pages 14-33. Seminars are NOT included with the full conference package. Class sizes are limited so register early. Trade show pass is NOT included with seminar registration.

## Full Conference Package

Your full conference package includes:

- General Education Session
- Trade Show Pass for Tuesday and Wednesday

## Family Registration

Complimentary registration is offered to spouses/significant others and children of Carolinas GCSA members. Guests will have access to the trade show Tuesday and Wednesday.

## Complimentary Parking

Complimentary parking in the large lot behind the Myrtle Beach Convention Center is made possible with the partnership by Envu, Carolina Fresh Farms, Nufarm, PBI-Gordon Corp. and Regal.

## No Smoking Policy

The MBCC and all official Carolinas GCSA Conference and Show events will be smoke free.

## Alcohol Policy

Alcohol is only allowed from host bars during Caroliona Night event on Tuesday night.



# MEET THE SPEAKERS



**Zee Ahmed, Ph.D.**

Dr. Zee Ahmed brings nearly a decade of expertise in entomological pest research, with a specialized focus on pests impacting the turf and ornamental industry. His scientific career began in 2012 with a postdoctoral appointment at the University of Florida, followed by four years as a scientist with the Florida Department of Agriculture and Consumer Services. He later served as a Research Entomologist with the United States Department of Agriculture, where he advanced integrated pest management strategies targeting invasive insect species. Since joining Clemson University in 2024, Dr. Ahmed has collaborated closely with golf course superintendents and turf managers across South Carolina to develop effective, economical, and environmentally sound pest management solutions. When not in the field—or swapping nets and stories with stakeholders—you'll likely find him on a cricket pitch or off exploring new corners of the map with his kids, curious about every bug, snack, and roadside stop along the way.



**Terri Billeisen, Ph.D.**

Terri Billeisen completed her B.S. and M.S. degrees in turfgrass entomology at Purdue University and moved to North Carolina in 2011 to continue research in the field. She completed her Ph.D. and post-doctoral research in turfgrass entomology under the direction of Dr. Rick Brandenburg. She has been an extension associate at NC State since January 2017.



**Jordan Booth, Ph.D.**

Jordan Booth, Ph.D., is the Southeast Region Agronomist with the USGA. He received his M.S. in Plant Pathology from Virginia Tech University under the direction Dr. David McCall. He earned his B.S. degree in Turfgrass Management at Clemson University. Jordan earned his Ph.D. at Virginia Tech. in Plant and Environmental Sciences with research focusing on warm-season putting green management. Jordan's tenure at Willow Oaks Country Club in Richmond, Virginia, as an assistant superintendent and superintendent from 2008-2018 provided him with extensive hands-on experience in all facets of golf course management.



**Becky Grubbs Bowling, Ph.D.**

Becky Bowling, Ph.D., is an Assistant Professor and Extension Specialist for Turfgrass Science and Management at the University of Tennessee in Knoxville, Tenn. Bowling earned her bachelor's and master's degrees at Texas Tech University and her Ph.D. in turfgrass management at the University of Georgia. For the past several years at Texas A&M, her research and extension efforts have focused on evaluating and communicating best management practices for turfgrass to promote environmental stewardship and resource-use efficiency in turfgrass systems and related urban greenspaces. Bowling's efforts have centered on water with particular emphasis on water efficiency, water capture, and water quality protection.



**Jim Brosnan, Ph.D.**

Dr. Brosnan is a Professor in the Plant Sciences Department at the University of Tennessee (UT) and Director of the UT Weed Diagnostics Center. His research focuses on controlling unique and problematic turfgrass weeds, particularly those with resistance to herbicides. His extension programs aim to provide education and diagnostic support to Tennessee's \$5.8 billion turfgrass industry. Dr. Brosnan received a B.S. in turfgrass science from Penn State University, an M.S. in plant, soil and insect sciences (turfgrass) from the University of Massachusetts Amherst, and a Ph.D. in agronomy (turfgrass) from Penn State University.



**Lee Butler**

Lee manages the Turf Diagnostics Lab while remaining active in the turf pathology field research program. This allows him to work with turfgrass managers to develop effective disease management plans based on his knowledge of current disease activity and observations made in fungicide efficacy trials. After receiving his B.S. in Turfgrass Management from NC State. Lee worked in the golf course and landscape management industries before returning to NC State to pursue a M.S. in Plant Pathology. During his graduate studies, Lee developed effective control recommendations for spring dead spot control in bermudagrass turf. In addition to speaking at various conferences and meetings across the United States, Lee gives guest lectures at the College of Agriculture and Life Sciences and at the College of Natural Resources at NC State University.



# MEET THE SPEAKERS



**Matthew Cutulle, Ph.D.**

Dr. Matthew Cutulle is an assistant professor of weed science at Clemson University in the Department of Plant and Environmental Sciences. He is responsible for research and extension weed

management projects in vegetables, small fruits, aquatics, and roadside vegetation management. He received his PhD from the Department of Plant Pathology, Physiology and Weed Science at Virginia Tech University, an MS in Plant Science from the University of Tennessee and a BS in Biology at Salisbury University. Prior to joining Clemson University, Dr. Cutulle was an herbicide development scientist with Syngenta Crop Protection focused safener technology, herbicide resistance, herbicide volatility, and formulation optimization.



**Matthew Elmore, Ph.D.**

Dr. Matt Elmore is associate extension specialist department of plant biology at Rutgers University. Matt earned his B.S. in Turfgrass Science from Penn State University before moving south and earning

an M.S. and Ph.D. from the University of Tennessee with a focus in turfgrass weed control. Prior to joining Rutgers, Matt was a Turfgrass Extension Specialist for Texas A&M AgriLife in Dallas, TX where his research efforts explored new strategies to control problematic weeds and reduce irrigation inputs in turfgrass.



**Travis Gannon, Ph.D.**

Dr. Travis Gannon is Professor of Turfgrass Science at North Carolina State University specializing in weed management and pesticide environmental fate and behavior. He obtained his B.S., M.S. and Ph.D.

from NC State University in the Department of Crop and Soil Sciences. Dr. Gannon's research program focuses on understanding various pests and optimizing pesticide programs for sustainable turfgrass management. Dr. Gannon currently advises five graduate students investigating various aspects of pest management and pesticide environmental fate and behavior and is actively involved in Weed Science Society of America, Southern Weed Science Society, GCSAA and Sports Turf Managers Association.



**Don Garrett, Jr., CGCS**

Don Garrett, CGCS, is a 42-year veteran of the Golf Course Maintenance Industry. He has been the superintendent at the Walker Course at Clemson University in

Clemson, SC for the past 25 years and previously worked at Kiawah Island Golf Resort in Charleston SC, and Dataw Island Club in Beaufort SC. Don has been a member of the Golf Course Superintendents Association of America since 1987 and earned the designation of Certified Golf Course Superintendent in 1995. He is a past president of the Carolinas GCSA and currently serves on their Board of Directors. Don is a 1985 graduate of Clemson University and teaches, advises and employs students in the University's Turfgrass program



**Roch Gaussoin, Ph.D.**

Roch Gaussoin, Ph.D., is an Emeritus Professor of Agronomy and Extension Specialist at the University of Nebraska-Lincoln. He is a native New Mexican and an alumnus of New Mexico State University,

earning his Bachelor's in Agronomy in 1980 and Master's in 1984. His Ph.D. was completed at Michigan State University in Turfgrass Science in 1988. Gaussoin has conducted academic research for more than 40 years. He is a frequently invited speaker to conferences nationally and internationally. Gaussoin has received the Distinguished Service Award from the Nebraska Turfgrass Association, the Exceptional Service Award from the Nebraska Golf Course Superintendents Association and the GCSAA Col. John Morley Distinguished Service Award. In 2023, he received the USGA Green Section Award. He retired from the University of Nebraska in October of 2024 and moved to Advance, NC to be closer to family.



**Brian Gietka**

Brian Gietka joined the Green Section in 2023 as an Agronomist in the East Region and serves the mid- Atlantic area with a focus on Virginia, DC, Maryland, Delaware, New Jersey, and eastern Pennsylvania.

He earned his bachelor's degree in turfgrass management from the University of Maryland prior to 25 years in the golf course maintenance industry, culminating in the Certified Golf Course Superintendent designation. Brian provides Course Consulting Visits and educational outreach throughout the region.



**Navdeep Godara, Ph.D.**

Navdeep Godara is an Assistant Professor of Turfgrass and Forage Weed Science at North Carolina State University. His research and extension program focuses on practical weed management challenges

in turfgrass systems, with an emphasis on precision weed control technologies, weed biology and ecology, herbicide



# MEET THE SPEAKERS



efficacy, and the development of sustainable turfgrass management practices. Dr. Godara earned his Ph.D. in Turfgrass Weed Science from Virginia Tech in 2025 and his M.S. in Weed Science from the University of Arkansas in 2022.



## Beth Guertal, Ph.D.

Beth Guertal is the Rowe Endowed Professor in the Crop, Soil and Environmental Sciences Department at Auburn University, AL. Dr. Guertal received her BS and MS degrees from The Ohio State University, and her PhD from Oklahoma State University. Her research program focuses on soil fertility issues in turfgrass management. Guertal served as a Technical Editor for Crop Science, and as an Associate Editor for the Soil Science Society of America (SSSA) Journal, Crop Science (CSSA) and Agronomy Journal (ASA). She is a past- Chair of Division C-5 (Turfgrass Management, CSSA), a Fulbright Fellow and a Fellow of CSSA, SSSA and ASA. Currently she is the immediate past President of the Crop Science Society of America.



## Greg Hufner

As Vice President, Greg oversees all aspects of the company's golf operations. A graduate of the University of Massachusetts, Stockbridge School of Agriculture, he has spent the past 25+ years working within the golf course industry. With experience as a Golf Course Superintendent, Director of Golf Course Operations and General Manager, Greg is well versed in operations and the business side of the golf course construction. His hands on approach insures that all customer experience high level of services and satisfaction through the construction/renovation process. Greg's relationships with Golf Course Architects and Superintendents are instrumental in company's development and expansion throughout the country.



## Jim Huntoon

Jim Huntoon is Professor of Golf and Sports Turf Management at Horry-Georgetown Technical College. He started this new role this year after 13 years as golf course superintendent at Heritage Club, in Pawleys Island, SC. Before that he was assistant superintendent at Caledonia Golf and Fish Club also in Pawleys Island, SC for 11 years. He also has held positions for Century Golf on transitional teams between superintendents at clubs in the Carolinas. Jim has a BS in Community and Regional Planning from Iowa State University, Ames, IA and an AS in Golf Course Management from Horry-Georgetown Technical

College, Conway, SC. He loves family, friends and everything about golf.



## Wendell Hutchens, Ph.D.

Dr. Hutchens' main area of expertise is turfgrass pathology. Turfgrass diseases cause massive damage and losses to sod farms, golf courses, athletic fields, parks, and home lawns in both Arkansas and globally. His research is centered around how to maintain healthy turfgrass and combat turfgrass diseases with traditional cultural and chemical practices as well as with cutting-edge new technology such as drones and GPS-guided sprayers. He is also interested in general management strategies to mitigate abiotic stress to cool- and warm- season turfgrasses. This includes management practices to reduce winter injury to warm-season grasses, proper application methods for plant growth regulators and demethylase inhibiting fungicides, and planting drought-tolerant native grasses as lawn alternatives.



## Jim Kerns, Ph.D.

Jim Kerns is a Professor and Extension Specialist of Turfgrass Pathology at NC State University. His program focuses on the etiology, epidemiology and management of Turfgrass diseases of both warm and cool-season grasses. His program actively researches how fungicides move in the root zone after post-application irrigation, take-all root rot etiology and management and Pythium root rot management. Each year his program conducts 50 to 70 different fungicide efficacy trials and examines over 400 samples for disease in the Turfgrass Diagnostic Lab.



## Richard Latin, Ph.D.

Richard Latin, Ph. D. is a Professor Emeritus of Plant Pathology from Purdue University in West Lafayette, Ind, where he was a member of the faculty for more than 37 years. He is now working as an academic and industry consultant in Pinehurst, N.C. Latin's research focused on factors that influence fungicide performance, fungicide-resistance in turf pathogens, and weather-based systems for scheduling fungicide applications. He has contributed educational seminars at GCSAA conference since 2009, authored many research papers, and the industry standard textbook, A Practical Guide to Turfgrass Fungicides. In 2018, Latin was honored with the GCSAA John Morely Distinguished Career Award and was recognized as a Scientific Fellow of the American Phytopathological Society.

# MEET THE SPEAKERS



## Shane LeBaron

Shane LeBaron is a highly respected golf instructor who has worked with or studied under top teachers like Jim Hardy, Stan Utley, and Butch Harmon. He has been Director of Instruction at some of the most prestigious golf clubs across the U.S., including Belfair Golf Club (SC), Wigwam Resort (AZ), Knollwood Club (IL), Mirabel Golf Club (AZ), and Cherry Hills Country Club (CO). In September 2024, he became the Director of Instruction at Olde Eight Golf Club in Greenwood, SC.



## Carson Letot, Ph.D.

Carson is an instructor at Sandhills Community College and the coordinator for the Greenkeeper Apprenticeship Program. Prior to working with the USGA, he completed a doctorate at Penn State in Agricultural Education. Carson has worked both in the turfgrass industry on golf course around the world as well as in the classroom as an agriculture and environmental science teacher at Montague High School in Montague, Michigan. Carson graduated from Cornell University with a Masters and has two bachelor degrees from Michigan State University.



## Nick Mazzella

Nick began his career in the golf industry in 1997 after graduating from Penn State with a degree in Landscape Architecture. His professional path started at Williamsburg Environmental Group (now Stantec) where he developed construction documents, erosion control and wetland mitigation plans for golf course construction and renovation projects across the southeastern U.S. Armed with more than 20 years of experience in the business, Nick launched the Mazzella Partnership in 2018. The depth and breadth of his experience in golf construction bring his client's on any level of collaboration.



## David McCall, Ph.D.

David McCall, Ph.D., is an Associate Professor and Extension Specialist of Turfgrass Pathology and Precision Management in Virginia Tech's School of Plant and Environmental Sciences. His lab currently focuses on mapping turfgrass pests for targeted management and an improved understanding of epidemics, integrated management of diseases and nematodes affecting turfgrasses, and understanding the impact of diseases and other disorders on field playability.



## Bert McCarty, Ph.D.

Bert McCarty is a Professor Emeritus of Horticulture specializing in turfgrass science and management from Clemson University in Clemson, South Carolina (USA). Previously, he held a similar position at the University of Florida. He has published numerous articles dealing with all phases of turfgrass management and is an oft requested speaker. He is currently authors or co-authors 11 books, is a co-author for the GCSAA seminars, Weed Control, Advanced Weed Management, Advanced Management of Bermudagrass Golf Greens, and Advanced Management of Bentgrass Golf Greens and is active in a number of professional societies.



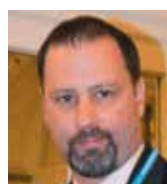
## Jim Murphy, Ph.D.

Dr. Murphy is the Extension Specialist in Turfgrass Management at Rutgers University. He conducts extension and research programs related to identifying best management practices for turfgrasses grown in the metropolitan region around New Jersey. His work often focuses on developing a better understanding of turfgrass response to soil-related stresses. He is internationally recognized as an authority on best management practices that enhance the stress tolerance, persistence, and environmental benefits of cool- season turf.



## Chris Neff

Chris Neff is the USGA agronomist in the Eastern Region of the United States. He works closely with courses in the Southeast, including the Carolinas and northern Florida. He has more than three decades of working experience on a golf course. He served nine years as the director of greens and grounds at Wexford in Hilton Head, South Carolina. Before Wexford, he worked as a superintendent at Timuquana Country Club in Jacksonville, FL and as an assistant superintendent at TPC Sawgrass, PonteVerde, FL. He graduated from the University of Florida in 1996 with a degree in environmental horticulture.



## Rob Richardson, Ph.D.

Rob Richardson, Ph.D., is a Professor and Extension Specialist at North Carolina State University. His primary appointment focuses on research and extension related to aquatic plant management. Rob has many years of experience in aquatic plant management and advises aquatic managers across the US as well as internationally. He is a Past President of the Aquatic Plant Management Society and Past Editor of the Journal of Aquatic Plant Management.

# MEET THE SPEAKERS



He currently serves as a Board of Directors Member for the Weed Science Society of America and serves as a subject matter expert to US EPA on aquatic plant management.



**Joe Roberts, Ph.D.**

Joe Roberts, Ph.D., is an Assistant Professor and Extension Specialist in Turfgrass Pathology and Nematology at Clemson University. He joined the Department of Plant and Environmental Sciences in fall of

2019. Current projects in his lab are aimed at understanding microbial relationships across turfgrass systems in an effort to improve turfgrass health. His research and extension programming focuses on plant pathogen interactions and cultural management tools that limit fungal, nematode, and bacterial pathogens of amenity turfgrasses.



**Drew Rogers**

Drew Rogers began his career in golf at Quail Creek Country Club in Robinson, Illinois. He earned a degree in Landscape Architecture from the University of Kentucky in 1991, with the goal of becoming

a golf course architect. In 1992, Drew joined renowned architect Arthur Hills, quickly rising to manage major projects and becoming a prominent figure in the firm. He was named a full partner in 1999 and accepted into the American Society of Golf Course Architects in 2001. Over nearly two decades, Drew collaborated on more than 30 new course designs and 20 major renovations at prestigious clubs including Oakland Hills, Oakmont, Congressional, and the Country Club of North Carolina. In 2010, Drew founded JDR, a boutique design practice dedicated to helping existing golf facilities implement strategic improvements and long-term planning through personalized service and enduring design excellence.



**Ken Rost**

Ken Rost is the founder of Frost Inc which specializes in spray technology products for golf and turf care. He been fitting spray equipment with GPS guided application systems for the last 10 years. Prior to Frost

Inc, Ken was the OEM and International Sales manager for Pentair/Hydro. Ken earned his undergraduate and Master's degrees in Agricultural Science at University of Minnesota. He currently resides on his farm in Shafer MN. Ken's experience working hands-on with precision farming technologies and the people who use it, brings a realistic approach to the execution of spray applications.



**Wesley Stewart**

Wesley Stewart has a Master of Science in Analytics from NC State University. February 2023, he joined the USGA as a Data Scientist. His work likely involves crunching numbers, analyzing golf-related data, and helping the USGA make informed decisions to enhance the game of golf.



**Cole Thompson, Ph.D.**

Dr. Cole Thompson assists with the administration of the USGA Turfgrass and Environmental Research program, working closely with Dr. Mike Kenna. Cole coordinates with USGA-funded

scientists and identifies research areas that have potential to improve playing conditions and golf course management sustainability. Cole earned his bachelor's, master's and Ph.D. degrees from Kansas State University. He was a USGA Green Section intern as an undergraduate and worked as an assistant golf course superintendent before entering graduate school. Prior to joining the USGA, Cole conducted turfgrass research, extension, and teaching activities as an assistant professor at the University of Nebraska-Lincoln and at Cal Poly-San Luis Obispo.



**George Waters**

George Waters holds a Master's Degree in Landscape Architecture from the University of Guelph in Ontario, Canada, where his Masters research focused on golf courses in coastal dunes and included field study

of the great links in Great Britain and Ireland. Since then, he has both visited and worked on with leading architects some of the world's best courses in the United States, Great Britain, Ireland, Continental Europe, and Australia including Barnbougle Dunes, Sebonack, The Renaissance Club at Archerfield, California Golf Club of San Francisco, and Pinehurst No. 2. George now works for the USGA Green Section as Education Manager

# PESTICIDE CREDITS AND GCSAA EDUCATION POINTS

	ID #	Seminar	Instructor	SC	NC	GA	GCSAA Ed.Points.
Monday Morning 8:00-11:30 am	1	Advanced Management of Ultradwarf Bermudagrass Golf Greens	Bert McCarty, Ph.D. Joe Roberts, Ph.D.	3	2	3	.35
	2	(NEW) Practical Strategies for Managing Insect Pests for Cool-Season Turfgrasses	Zee Ahmed, Ph.D. Terri Billeisen, Ph.D.	3	3.5	2	.35
	3	Spray Masters Making the Most Out of All You Apply	Travis Gannon, Ph.D.	3	3.5	2	.35
	4	(NEW) Pain in the Grass: POA Management in the Southeast	Jim Brosnan, Ph.D.	3	3.5	3	.35
	5	(NEW) Understanding Turfgrass Fungicides	Wendell Hutchens, Ph.D. Richard Latin, Ph.D.	3	3.5	3	.35
	6	Troubleshooting & Diagnosing Turf Issues!	Lee Butler, Jim Kerns, Ph.D.	3	3.5	2	.35
Monday Afternoon 12:30-4:00 pm	7	Making Herbicides Work Or Why They Sometimes Fail?	Travis Gannon, Ph.D., Bert McCarty, Ph.D.	3	3.5	3	.35
	8	(NEW) From Selection to Perfection: Science-Driven Bunker Success	Brian Gietka Chris Neff	0	0	0	.35
	9	(NEW) Smarter Spraying: Mapping Pests with GPS, Sensors and Drones	Ken Rost, Wendell Hutchens, Ph.D. David McCall, Ph.D.	0	0	0	.35
	10	(NEW) Advancing Turf Health Through Microbiome and Ecological Practices!	Zee Ahmed, Ph.D. Joe Roberts, Ph.D.	3	0	3	.35
	11	Advanced Weed Management - Cool Season Turfgrasses	Jim Brosnan, Ph.D., Matt Elmore, Ph.D.	3	3.5	3	.35
	12	You Pick the Pests: Turf Insect Management	Terri Billeisen, Ph.D.	3	3.5	3	.35
Tuesday Morning • 8:00-11:30 am	13	Ultimate Weed Control Guide (Panel Discussion)	Bert McCarty, Ph.D. (Moderator) Jim Brosnan, Ph.D., Matt Elmore, Ph.D. Travis Gannon, Ph.D.	3	3.5	3	.35
	14	All the Forms of Phosphorus - Why You Should Care!	Beth Guertal, Ph.D.	3	3.5	2	.35
	15	Being an Effective Superintendent....It's Not all about Growing Grass!	Don Garrett, Jr. CGCS Jim Huntton	0	0	0	.35
	16	How to Stay Cool when Cool-Season Putting Greens Decline	Lee Butler, David McCall, Ph.D.	3	3.5	3	.35
	17	Getting to the Root of Managing Soilborne Diseases - Warm Season Turfgrasses	Jim Kerns, Ph.D. Joe Roberts, Ph.D.	3	3.5	3	.35
	18	Aging Putting Green Root Zone & Management of Organic Matter	Roch Gaussoin, Ph.D. Jim Murphy, Ph.D.	3	0	3	.35
	19	(NEW) Elevating Excellence: Strategic Approaches to Leadership, Scheduling, and Wellness in Golf Course Management	Steve Hamilton, CGCS David Lee Chris Neff	0	0	0	.35
	20	(NEW) Water: The Role Golf Courses Can and Should Play! *	Becky Grubbs Bowling, Ph.D.	3	0	3	.35
	21	(NEW) Building Strong Foundations: Expectations and Communication Between Golf Course Superintendents and Assistant Superintendents	Richard Brown, Tim Carpenter, Harrison Howe, Alex Tolbert	0	0	0	.35
Tuesday Afternoon • 12:30-4 pm	22	(NEW) Soil and Water Chemistry: Definitions, Discussions and (Things to) Do!	Beth Guertal, Ph.D. Becky Grubbs Bowling, Ph.D.	0	0	0	.35
	23	The Architecture of a Successful Renovation!	Greg Hufner, <i>Total Turf Golf Services</i> Chris Jordan, <i>Olde Eight Golf Club</i> Shane LeBaron, <i>Olde Eight Golf Club</i> Nick Mazella, <i>Mazzella Partnership</i> Chris Neff, <i>USGA Green Section</i> Drew Rogers, <i>JDR Design Group</i>	0	0	0	.35
	24	Nematodes: Past, Present, and Future Directions for Management of these Elusive Pests	David McCall, Ph.D. Joe Roberts, Ph.D.	3	3.5	3	.35
	25	Successful Bentgrass Management on Greens and Fairways!	Matt Elmore, Ph.D., Jim Murphy, Ph.D.	3	2	3	.35
	26	(NEW) Pesticides 101 - Fundamentals of Safe and Effective Pesticide Use in Turfgrass Management!	Zee Ahmed, Ph.D., Lee Butler Navdeep Godara, Ph.D.	3	3.5	3	.35
	27	Strategies for Goosegrass, Annual Bluegrass, Crabgrass, Doveweed and Other Growing Weed Problems!	Jim Brosnan, Ph.D. Travis Gannon, Ph.D.	3	3.5	3	.35
	28	Everything You Need To Know About Ultradwarf Bermudagrass (Panel Discussion)	David Lee (Moderator) Steve Hamilton, CGCS, Matthew Jones, CGCS, Kevin Lutz	3	3.5	3	.35
	29	(NEW) USGA Power Hour	Jordan Booth, Ph.D., <i>USGA Green Section</i> Carson Letot, Ph.D., <i>USGA Green Section</i> Wesley Stewart, M.S., <i>USGA Green Section</i> Cole Thompson, Ph.D., <i>USGA Green Section</i> George Waters, <i>USGA Green Section</i>	0	0	0	.35
	30	Aquatic Plant Management for GC Waterbodies*	Matt Cutulle, Ph.D., Rob Richardson, Ph.D.	3	3.5	3	.35
		General Education Session	<i>Pesticide credits applied for</i>	1	1	2	.30



# CAROLINAS GCSA CONFERENCE AND TRADE SHOW

## NOVEMBER 17 – 19, 2025

Register online at [www.carolinasgcsa.org](http://www.carolinasgcsa.org)

Registration will open at noon on Tuesday, September 9

■ REGISTRATION OPTIONS						
<b>EARLY BIRD FEE REGISTRATION Deadline:</b> September 30, 2025 11:59 pm EST <b>ADVANCED FEE REGISTRATION Deadline:</b> October 31, 2025 11:59 pm EST <b>STANDARD FEE REGISTRATION Starts:</b> November 1, 2025 12 am EST						
	Early Bird Fee Prior to Sept 30		Advanced Fee Oct 1-31		Standard Fee After Oct 31	
	Member	Non-Mem.	Member	Non-Mem.	Member	Non-Mem.
<b>Full Conference Package</b>	185	215	200	230	225	255
<i>(Package includes General Education Session, Trade Show, <b>Excludes Seminars</b>)</i>						
SUNDAY						
Assistant Superintendent Reception	0	0	0	0	0	0
MONDAY						
■ SEMINARS SELECTIONS See page 45						
	Member	Non-Mem.	Member	Non-Mem.	Member	Non-Mem.
Mon. (8-11:30)	70	100	85	115	110	140
Mon. (12:30-4:00)	70	100	85	115	110	140
Medal Play	115	145	130	160	155	185
Senior Medal Play (Over 50)	115	145	130	160	155	185
Four Ball	115	145	130	160	155	185
Captain's Choice	115	145	130	160	155	185
Sporting Clay	75	105	100	130	115	145
TUESDAY						
■ SEMINARS SELECTIONS See page 45						
	Member	Non-Mem.	Member	Non-Mem.	Member	Non-Mem.
Tues. (8-11:30)	70	100	85	115	110	140
Tues. (12:30-4:00)	70	100	85	115	110	140
Trade Show Pass (T & W)	95	125	110	140	135	165
WEDNESDAY						
Fellowship Breakfast	0	0	0	0	0	0

# 2025 SUPERINTENDENT IMAGE CAMPAIGN



The Carolinas GCSA greatly appreciates the support of the following companies in promoting awareness and appreciation of the role of golf course superintendents.

## GOLD CLUB

### **Arboguard Tree Specialists**

Nick Pizza, *District Manager*  
P. O. Box 26767  
Charlotte, NC 28221  
Phone (704) 688-7237  
Nicholas.Pizza@davey.com

### **Coastal Floratine, Inc.**

Jeffrey A. Fitcher, *President*  
P. O. Box 30267  
Myrtle Beach, SC 29588  
Phone (843) 215-6652  
coastalfloratine@gmail.com

### **CR Lutzke Golf**

CT Shaw, *President*  
524 Kingsworth Lane SE  
Leland, NC 28451  
Phone (910) 664-0145  
ct@crlutzke.com

### **East Coast Turf Solutions, LLC**

Matt Spatara, *President*  
8097 Sierra Oaks Blvd.  
Jacksonville, FL 32219  
Phone (904) 615-0288  
matt@eastcoastturf.net

### **Green Resource**

Jonathan B. Annas, *Executive Director*  
5204 Highgreen Court  
Colfax, NC 27235  
Phone (336) 855-6363  
jannas@green-resource.com  
Robert G. Herring, *Director, Sales & Marketing*  
P O Box 429  
Colfax, NC 27235  
Phone (336) 215-5368  
rherring@green-resource.com

### **J.K. Morro, Inc.**

Thomas P. Porter, *Owner*  
124 Palos Verde Drive  
Mooresville, NC 28117  
Phone (704) 928-9839  
tporter@jkmorro.com

### **Nufarm Americas**

Dave Dettmer, *CGCS*  
*Territory Manager, Southeast Region*  
4000 Aerial Center Parkway  
Suite 101  
Morrisville, NC 27560  
Phone (919) 935-9322  
dave.dettmer@nufarm.com

### **Pumps, Motors & Control, Inc.**

Dale Bowman, *President*  
5727 Luce Street  
Houston, TX 77087  
Phone (832) 487-9463  
pmc-controls@live.com

### **Revels Turf and Tractor**

Anthony Revels, *CEO*  
5118 Rawls Church Road  
Fuquay-Varina, NC 27526  
Phone (919) 552-5697  
anthony@revelstractor.com

### **RNA Turf**

Rex C. Davis, *President*  
PO Box 1797  
Indian Trail, NC 28079  
Phone (704) 222-5600  
rdavis@rnaturf.com

### **SiteOne Landscape Supply**

Torrey M. Boman, *Golf Sales Rep*  
8925 Midway West Rd  
Raleigh, NC 27617  
Phone (919) 625-1058  
tboman@siteone.com

### **Smith Turf & Irrigation**

Anna-Lindsay Yarbrough, *President & COO*  
Brent Miller, *Sales Manager, Golf & Grounds Group*  
P.O. Box 669388  
Charlotte, NC 28266  
Phone (704) 909-3312  
anna-lindsay.yarbrough@smithturf.com  
brent.miller@smithturf.com

### **Southern Ag**

Andrew L. Wampler, *Sales Representative*  
P O Box 429  
Hendersonville, NC 28793  
Phone (828) 674-2594  
andrew.wampler@southernag.com

### **Syngenta**

Ben Peters, *Territory Manager, Professional Solutions*  
Phone (919) 214-2054  
ben.peters@syngenta.com  
Madelyn Tappan  
*Territory Manager, Professional Solutions*  
Phone (302) 725-8306  
madelyn.tappan@syngenta.com  
Danny Jones  
*Territory Manager, Professional Solutions*  
Phone (770) 329-8686  
danny.jones@syngenta.com

### **Matt Drayton**

*Territory Manager, Professional Solutions*  
Phone (804) 912-0825  
matthew.drayton@syngenta.com

### **The CartPath Company**

Mark T. Rownd, *President*  
2146 Roswell Road, St. 108-330  
Marietta, GA 30062  
Phone (770) 330-7380  
mark@thecartpathco.com

### **Triangle Turf & Ornamental**

Terry J. Kallam, *Division Manager*  
455 US 70 East, Suite 120  
Garner, NC 27529  
Phone (919) 322-1093  
tjkallam@trianglecc.com

### **Tri-State Pump & Control, Inc.**

Tripp Cobb, *President*  
1162 Chastain Road  
Liberty, SC 29657  
Phone (864) 843-8100  
tcobb@tspumps.com

## SILVER CLUB

### **Aqua-Aid Solutions**

Sam Green, *President*  
Bill Stowers, *Project Manager*  
5484 S. Old Carriage Road  
Rocky Mount, NC 27803  
Phone (910) 367-3633  
sam@aquaaid.com  
bstowers@aquaaid.com

### **BASF Corp.**

Scott Waltz, *Areas Sales Manager NC and SC*  
5104 Winddance Place  
Holly Springs, NC 27540  
Phone (919) 279-3117  
scott.waltz@basf.com

### **The Aquatrols Company**

Chris Vincent, *CGCS, District Manager*  
205 Bellewood Drive  
Easley, SC 29640  
Phone (919) 901-7348  
cvincent@aquatrols.com

### **The Mazzella Partnership, LLC**

Nick Mazzella, *President*  
400 Landau Road  
Waxhaw, NC 28173  
Phone (704) 650-4859  
nick@mazzellapartnership.com

**Booth  
1004**

# CHEMICAL DYNAMICS



**\*Available in NC, SC, FL, TN, VA, MD & DC**







**BEARD**  
EQUIPMENT



# ACE 18 HOLES EVERY DAY

JOHN DEERE  
OPERATIONS  
CENTER™

**PRO Golf** HELPS DELIVER COURSE PERFECTION.

With it, you can connect, guide and manage daily operations with a real-time view from any internet device. Monitor dozens of pieces of equipment. Assign crews to tasks. Control overhead, irrigation and more. Connect with Beard and Revels to schedule a Pro Golf demo.

[BeardEquipment.com](http://BeardEquipment.com) | [RevelsTractor.com](http://RevelsTractor.com)